

JetFlash[®]

User's Manual

(Version 3.0)



Table of Contents

Introduction.....	2
Package Contents.....	2
Features.....	2
System Requirements	2
Driver Installation	3
Driver Installation – Windows® Me, 2000, XP, 7 and Vista	3
Driver Installation – Mac® OS 9.0, or Later	3
Driver Installation – Linux® Kernel 2.4.2, or Later	3
Formatting the JetFlash® in Windows®	4
Safely remove the JetFlash® from your Computer	5
Proper JetFlash® Removal – Windows® Me, 2000, XP, 7 and Vista.....	5
Proper JetFlash® removal – Mac® OS 9.0 or Later, Linux® Kernel 2.4.2 or Later...5	5

Introduction

Congratulations on purchasing Transcend's **JetFlash**[®]. This handy little device lets you connect to any desktop or notebook computer with a USB port for fast, easy data transfer. The **JetFlash**[®] is completely plug-and-play, and has a large storage capacity as well as fast transfer rates, making it perfect for storing and transporting your files, folders, documents, photos and other personal digital content. In addition, the **JetFlash**[®]'s small convenient size, superior data retention and impressive appearance will provide you with a brand-new data storage experience.

Package Contents

The **JetFlash**[®] package includes the following items:

- JetFlash[®] USB Flash Drive
- Quick Start Guide
- Software CD (certain models)
- Lanyard, strap, or key ring accessory (refer to package for specific type)

Features

- Hi-Speed USB 2.0 compliant and backwards compatible with USB 1.0/1.1
- Vista compatible
- Supports Windows ReadyBoost[®](Hi-Speed series)
- Easy Plug and Play installation
- Driverless
- Powered via the USB port. No external power or battery needed
- Includes useful data-management software

System Requirements

Desktop or notebook computer with a USB port and one of following operating systems:

- Windows[®] Me
- Windows[®] 2000
- Windows[®] XP
- Windows Vista[®]
- Windows[®] 7
- Mac[®] OS 9.0, or later
- Linux[®] Kernel 2.4.2, or later

Driver Installation

Driver Installation – Windows® Me, 2000, XP, 7 and Vista

No drivers are required. Newer Windows operating systems have built-in drivers that support the **JetFlash®**. Simply plug your **JetFlash®** into an available USB port and Windows will automatically install the files needed to use your device. A “**Removable Disk**” with a newly assigned drive letter will appear in the **My Computer** window.

Driver Installation – Mac® OS 9.0, or Later

No drivers are required. Just plug the **JetFlash®** into an available USB port and your computer will automatically detect it.

Driver Installation – Linux® Kernel 2.4.2, or Later

No drivers are required. Just plug the **JetFlash®** into the USB port and mount it.

Example: 1. First create a directory for the **JetFlash®**:

```
“mkdir /mnt/jetflash”
```

2. Mount the **JetFlash®**:

```
“mount -a -t msdos /dev/sda1 /mnt/jetflash”
```

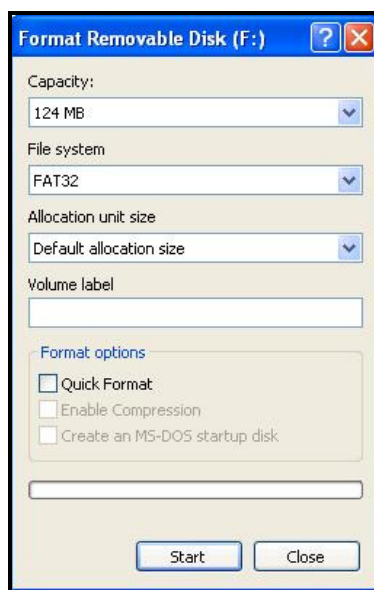
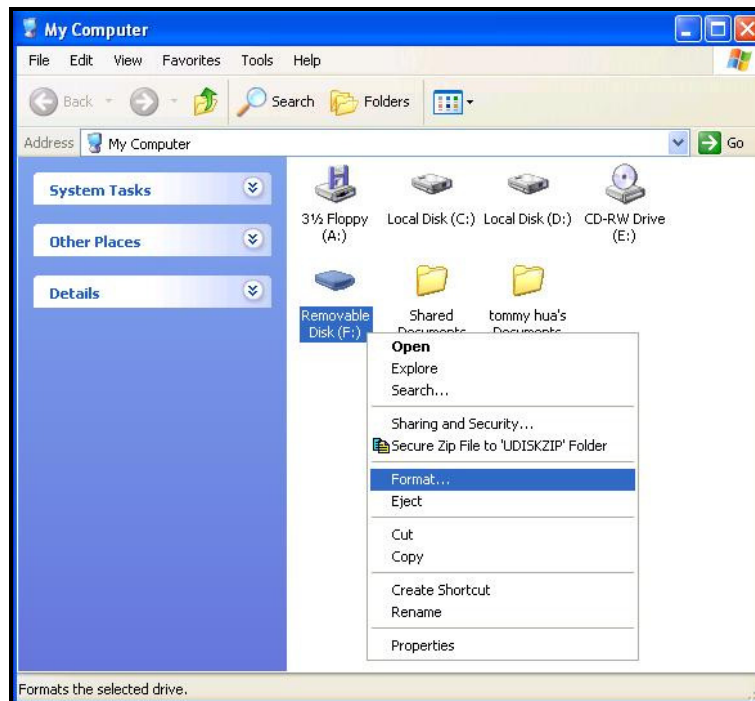
Formatting the JetFlash[®] in Windows[®]

1. Plug the **JetFlash[®]** into an available USB port.
2. Open the “My Computer” window.
3. Right-click on the “Removable Disk” icon that represents the JetFlash[®].
4. Select “**Format**” in the drop down menu.



WARNING! Formatting the disk will erase all of the data on your JetFlash[®]

5. Click on the “**Start**” button and follow the on-screen instructions to format the **JetFlash[®]**.



Safely remove the JetFlash[®] from your Computer

Proper JetFlash[®] Removal – Windows[®] Me, 2000, XP, 7 and Vista

1. Click on the Removable Hardware icon  in the system tray.
2. The “**Safely Remove Hardware**” pop-up menu will appear. Select it to continue.



3. A message box will appear stating: “The ‘USB Mass Storage Device’ device can now be safely removed from the system.”



4. Unplug the **JetFlash[®]** from your computer.

Proper JetFlash[®] removal – Mac[®] OS 9.0 or Later, Linux[®] Kernel 2.4.2 or Later

First drag the Disk icon that corresponds to your **JetFlash[®]** into the trashcan, then unplug your **JetFlash[®]** from the USB port.



WARNING! Improper removal of the JetFlash[®], unstable system power, or system hang-ups / hard re-boots while data is being written to the JetFlash[®] may cause file corruption or permanent damage to the drive. The best way to prevent this is to avoid opening and continuously editing files directly from the JetFlash[®]. It is strongly recommended that you copy files from the JetFlash[®] to your hard disk first, then edit the files from the hard disk instead. Transfer the files back to the JetFlash[®] after editing.