

1 Port RS232 Serial over IP Device Server

NETRS232



*actual product may vary from photos

DE: Bedienungsanleitung - de.startech.com

FR: Guide de l'utilisateur - fr.startech.com

ES: Guía del usuario - es.startech.com

IT: Guida per l'uso - it.startech.com

NL: Gebruiksaanwijzing - nl.startech.com

PT: Guia do usuário - pt.startech.com

For the most up-to-date information, please visit: www.startech.com

FCC Compliance Statement

This equipment has been tested and found to comply with the limits for a Class B digital device, pursuant to part 15 of the FCC Rules. These limits are designed to provide reasonable protection against harmful interference in a residential installation. This equipment generates, uses and can radiate radio frequency energy and, if not installed and used in accordance with the instructions, may cause harmful interference to radio communications. However, there is no guarantee that interference will not occur in a particular installation. If this equipment does cause harmful interference to radio or television reception, which can be determined by turning the equipment off and on, the user is encouraged to try to correct the interference by one or more of the following measures:

- Reorient or relocate the receiving antenna.
- Increase the separation between the equipment and receiver.
- Connect the equipment into an outlet on a circuit different from that to which the receiver is connected.
- Consult the dealer or an experienced radio/TV technician for help.

Use of Trademarks, Registered Trademarks, and other Protected Names and Symbols

This manual may make reference to trademarks, registered trademarks, and other protected names and/or symbols of third-party companies not related in any way to StarTech.com. Where they occur these references are for illustrative purposes only and do not represent an endorsement of a product or service by StarTech.com, or an endorsement of the product(s) to which this manual applies by the third-party company in question. Regardless of any direct acknowledgement elsewhere in the body of this document, StarTech.com hereby acknowledges that all trademarks, registered trademarks, service marks, and other protected names and/or symbols contained in this manual and related documents are the property of their respective holders.

Table of Contents

Introduction	1
Packaging Contents	1
System Requirements.....	1
Product Diagram	2
Front View	2
Rear View.....	2
DB-9 Connector Pinout	3
RJ-45 Connector Pinout	3
Installation	4
Hardware Installation	4
Software Installation.....	5
Operation	5
Specifications	8
Technical Support	10
Warranty Information	10

Introduction

Packaging Contents

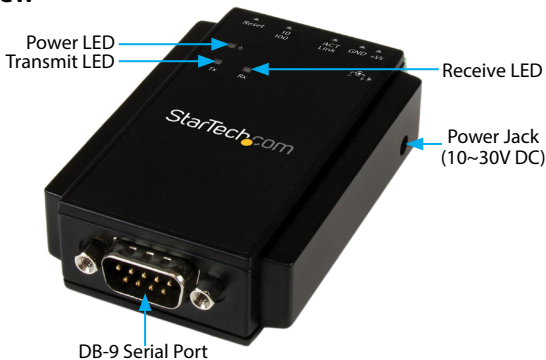
- 1x Serial over IP Device Server
- 1x DIN Rail Kit
- 1x Universal Power Adapter (NA/UK/EU)
- 1x Software CD
- 1x Quick Start Guide

System Requirements

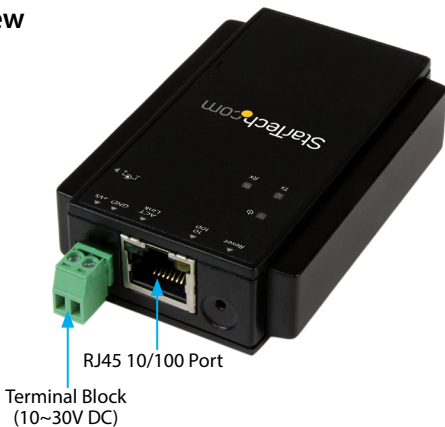
- RJ45 terminated Cat5 or higher Ethernet cabling
- 10/100Mbps compatible Ethernet network
- Windows® 8 / 8.1 (32/64bit), 7 (32/64), Vista(32/64), XP(32/64), 2000, Windows® Server 2012, 2008 R2, 2003(32/64)

Product Diagram

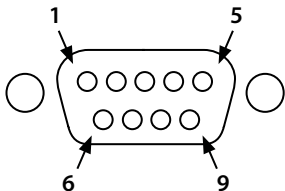
Front View



Rear View

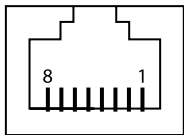


DB-9 Connector Pinout



Pin 1	DCD
Pin 2	RXD
Pin 3	TXD
Pin 4	DTR
Pin 5	GND
Pin 6	DSR
Pin 7	RTS
Pin 8	CTS
Pin 9	RI

RJ-45 Connector Pinout



PIN	Define
1	TX+
2	TX-
3	RX+
6	RX-

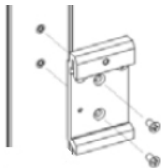
Installation

Hardware Installation

DIN-Rail Bracket:

Follow the below procedure to install the DIN-Rail bracket to the RS232 device server.

1. Remove the included DIN-Rail bracket, and screws from the package, and align the DIN-Rail bracket flush onto the back of the device server.
2. Align the bracket's mounting holes with that of the device servers pilot holes, and secure the bracket to the device server with the two included screws.



DIN-Rail Mounting:

Follow the below procedure to mount the device server to a DIN-Rail.

1. Tilt the unit, making sure that the metal spring located at the back is positioned on top of the DIN rail.
2. Push the unit towards the rail until a "click" sound is heard.

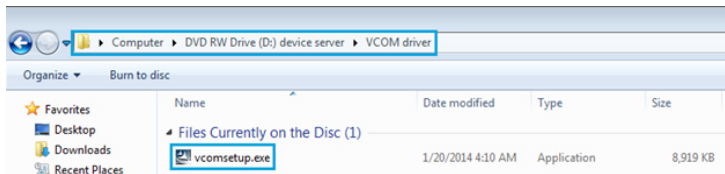
Connecting to Terminal Block Power:

The device server is powered by an included Universal Power Adapter, or a 2-wire 10~30V DC power source via the included terminal block.

1. Attach the included power adapter to an AC power source, or follow the below procedure for terminal block power setup.
2. Gently, yet firmly pull the terminal block connector housing from the device server.
3. Using a small flat head screw driver, loosen the screws for the terminal block connectors.
4. Connect the power and ground wires from your DC power source to the proper terminal block connectors and fasten the screws. The terminals are marked on the device server housing.
5. Reinsert the terminal block housing into the device server

Software Installation

1. Connect the device server's RJ45 interface to your Local Area Network (LAN).
Note: Alternatively, you can also use a crossover cable to connect the device server directly to your system for the initial configuration.
2. Insert the provided CD into your DVD/CD-ROM drive.
3. Browse to the folder "VCOM driver" and execute the "vcomsetup.exe" installer.

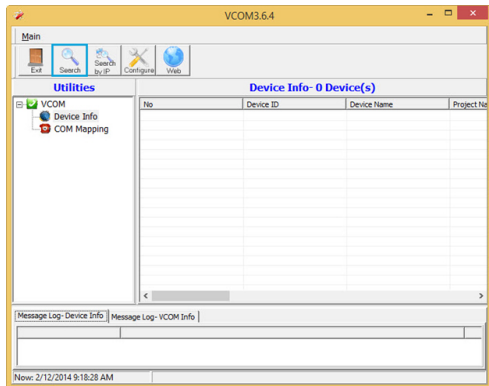


4. Follow the on-screen instructions to complete the installation of the VCOM and WinPcap software.

Operation

For full operation instructions, please visit www.startech.com/NETRS232

1. Start the software by launching the VCOM shortcut.
2. Click the Search button in the VCOM software window to locate the device.



- If required, allow access to the software through the Windows Firewall by clicking the "Allow access" button.



- Once the device is found, configure the PC to the same IP domain by clicking the "Configure" button. The default IP address of the device is "192.168.1.1".

Note: The default Gateway Address is "192.168.1.254".

- In the "Input Attributes" dialog, enter the following:

- Account Name:** admin
- Password:** 00000



- Once the device is connected, the "Configure Dialog" will open to set your desired IP settings.

Configure Dialog

Administrator

IP Address

Subnet Mask

Gateway

DNS

IP Configure

Static
 DHCP

Username Only 0-9, a-z, A-Z allowed

Password Only 0-9, a-z, A-Z allowed

Nickname Only 0-9, a-z, A-Z, _ allowed

UART

Mode

Baudrate

Character Bits

Parity Type

Stop Bit

Hardware Flow Control

7. Once your settings have been customized, click the "OK" button at the bottom of the screen.

Specifications

Interface	Serial
Industry Standards	IEEE 802.3, IEEE 802.3u
Ports	1
Connectors	1x DB-9 (9 pin; D-Sub) Male 1x RJ-45 Female 1x Terminal Block (2 wire) 1x DC Power
Auto MDIX	Yes
Compatible Networks	10/100 Mbps
Data Bits	5, 6, 7, 8
Flow Control	RTS/CTS, None
Max Baud Rate	230.4 Kbps
Parity	None, Even, Odd, Space, Mark
Remote Management Ability	Yes
Serial Protocols	RS-232
Stop Bits	1, 2, 1.5
Supported Protocols	VCOM, TCP Server, TCP Client, UDP, HTTP,DHCP, ICMP(PING), Static IP, ARP
Enclosure Type	Plastic
Product Dimensions (LxWxH)	86mm x 54mm x 23mm
LED Indicator(s)	1x Power 1x Tx 1x Rx 1x 10/100 Mbps Indicator 1x Link / Activity

Power Input	Terminal Block: 10~30V DC (2 wire) DC Jack: 10~30V DC 3.5mm
Power Consumption	1.45W Max
Enclosure Material	Plastic
Operating Temperature	0°C to 60°C (32°F to 140°F)
Storage Temperature	-10°C to 70°C (-14°F to 158°F)
Humidity	0~90% RH
Product Weight	2.29 oz (65 g)
Compatible Operating Systems	Windows® 8 / 8.1 (32/64bit), 7 (32/64), Vista(32/64), XP(32/64), 2000, Windows® Server 2012, 2008 R2, 2003(32/64)

Technical Support

StarTech.com's lifetime technical support is an integral part of our commitment to provide industry-leading solutions. If you ever need help with your product, visit www.startech.com/support and access our comprehensive selection of online tools, documentation, and downloads.

For the latest drivers/software, please visit www.startech.com/downloads

Warranty Information

This product is backed by a two year warranty.

In addition, StarTech.com warrants its products against defects in materials and workmanship for the periods noted, following the initial date of purchase. During this period, the products may be returned for repair, or replacement with equivalent products at our discretion. The warranty covers parts and labor costs only. StarTech.com does not warrant its products from defects or damages arising from misuse, abuse, alteration, or normal wear and tear.

Limitation of Liability

In no event shall the liability of StarTech.com Ltd. and StarTech.com USA LLP (or their officers, directors, employees or agents) for any damages (whether direct or indirect, special, punitive, incidental, consequential, or otherwise), loss of profits, loss of business, or any pecuniary loss, arising out of or related to the use of the product exceed the actual price paid for the product. Some states do not allow the exclusion or limitation of incidental or consequential damages. If such laws apply, the limitations or exclusions contained in this statement may not apply to you.

Hard-to-find made easy. At StarTech.com, that isn't a slogan. It's a promise.

StarTech.com is your one-stop source for every connectivity part you need. From the latest technology to legacy products — and all the parts that bridge the old and new — we can help you find the parts that connect your solutions.

We make it easy to locate the parts, and we quickly deliver them wherever they need to go. Just talk to one of our tech advisors or visit our website. You'll be connected to the products you need in no time.

Visit www.startech.com for complete information on all StarTech.com products and to access exclusive resources and time-saving tools.

StarTech.com is an ISO 9001 Registered manufacturer of connectivity and technology parts. StarTech.com was founded in 1985 and has operations in the United States, Canada, the United Kingdom and Taiwan servicing a worldwide market.