

# HP EliteBook Folio G1 Notebook PC



## The business-class notebook for collaboration

Exquisite craftsmanship and exceptional performance are united in the HP EliteBook Folio. With hand-selected materials and premium features optimized for collaboration, it's the choice for those who value a flawless experience.



- Windows 10 Pro<sup>1</sup>
- Screen Size: 31,75 cm (12.5") diagonal

### Elevating durable design

- Cutting-edge design, innovative engineering, and refined materials come together in the sophisticated and durable HP EliteBook Folio. Confidently take on the workday with this elegant PC that passed MIL-STD 810G testing.<sup>2</sup>

### Premium collaboration

- Engage teams, clients, and vendors with the crystal-clear audio by Bang & Olufsen and the high-performance HP Premium Collaboration Keyboard that allows you to launch calls and video chats at the touch of a button on the HP EliteBook Folio.

### Invest in security

- New security threats drive the need for new protections. HP Sure Start with Dynamic Protection<sup>3</sup> and security features in Windows 10 Pro<sup>1</sup> help secure access to your business.

### Featuring

- Power through your day with Windows 10 Pro<sup>1</sup> and the powerful, collaboration ready HP EliteBook Folio.
- The HP EliteBook Folio handles high-performance requirements with a 6th Gen Intel® Core™ processor,<sup>4</sup> PCIe SSDs, 8 GB of memory, and long battery life.
- Make conferencing from your PC as simple as the touch of a button with the backlit HP Premium Collaboration Keyboard.
- Pick the right display for the way you work with crystal-clear UHD<sup>5</sup> or FHD touch display options.<sup>5</sup>
- Stay productive with essential USB-C™ ports for charging mobile devices and more.
- Help boost efficiency with optional accessories like the HP Elite Thunderbolt™ 3 Dock,<sup>5</sup> the HP Executive Travel Dock,<sup>5</sup> and Elite Displays<sup>5</sup> that complement the sophisticated style of the HP EliteBook Folio.
- Protect, detect, and recover from malicious BIOS attacks with HP Sure Start with Dynamic Protection – the industry's first self-healing BIOS that monitors and corrects BIOS corruption in real-time.<sup>3</sup>
- The HP EliteBook Folio is precision engineered to the finest detail and passed MIL-STD 810G testing.<sup>2</sup>

# HP EliteBook Folio G1 Notebook PC Specifications Table



<b>Available Operating System</b>	Windows 10 Pro 64 <sup>1</sup> Windows 10 Home 64 <sup>1</sup>
<b>Processor Family<sup>2</sup></b>	Intel® Core™ m7 processor; Intel® Core™ m5 processor
<b>Available Processors<sup>2,3</sup></b>	Intel® Core™ m7-6Y75 with Intel HD Graphics 515 (1.2 GHz, up to 3.1 GHz with Intel Turbo Boost Technology, 4 MB cache, 2 cores); Intel® Core™ m5-6Y57 with Intel HD Graphics 515 (1.1 GHz, up to 2.8 GHz with Intel Turbo Boost Technology, 4 MB cache, 2 cores); Intel® Core™ m5-6Y54 with Intel HD Graphics 515 (1.1 GHz, up to 2.7 GHz with Intel Turbo Boost Technology, 4 MB cache, 2 cores)
<b>Chipset</b>	Chipset is integrated with processor
<b>Maximum Memory</b>	Up to 8 GB LPDDR3-1866 SDRAM Standard memory note: Transfer rates up to 1866 MT/s. Internal component upgrades to memory are not available after factory configuration.
<b>Internal Storage</b>	128 GB up to 512 GB M.2 SATA TLC SSD <sup>4</sup> up to 240 GB M.2 SATA MLC SSD <sup>4</sup> up to 256 GB M.2 PCIe SSD <sup>4</sup> up to 256 GB M.2 SATA SED MLC SSD <sup>4</sup>
<b>Display</b>	31,75 cm (12.5") diagonal FHD UWVA anti-glare ultra slim LED-backlit (1920 x 1080); 31,75 cm (12.5") diagonal FHD UWVA anti-glare ultra slim LED-backlit (1920 x 1080) Light weight; 31,75 cm (12.5") diagonal FHD UWVA ultra slim LED-backlit touch screen (1920 x 1080); 31,75 cm (12.5") diagonal UHD UWVA ultra-slim LED-backlit touch screen (3840 x 2160) <sup>6</sup>
<b>Available Graphics</b>	Integrated: Intel® HD Graphics 515
<b>Audio</b>	Audio by Bang & Olufsen; Integrated dual-microphone array; 4 integrated stereo speakers
<b>Wireless Technologies</b>	Intel 802.11a/b/g/n/ac (2x2) and Bluetooth® 4.2 Combo <sup>5</sup> (Internal component upgrades to connectivity are not available after factory configuration.)
<b>Communications</b>	Ethernet via accessory dongle (optional)
<b>Ports and Connectors</b>	2 USB Type-C™ with Thunderbolt™ support (docking, charging and USB 3.1); 1 headphone/microphone combo
<b>Input Device</b>	Backlit keyboard Glass ClickPad (with chemically etched surface), taps and gestures enabled by default, two-finger scrolling, two finger zoom (pinch)
<b>Webcam</b>	720p HD webcam <sup>6</sup>
<b>Available Software</b>	Buy Office; HP BIOSphere with HP Sure Start; HP Connection Manager (models with Windows 7); HP Wireless Hotspot; HP Mobile Connect (EMEA only); HP PageLift; HP Recovery Manager; HP Support Assistant; HP ePrint; HP SoftPaq Download Manager; Absolute Data Protect (models with Windows 8.1); CyberLink Power DVD; CyberLink YouCam BE; HP Touchpoint Manager; Foxit PhantomPDF Express for HP; HP Connection Manager; HP File Sanitizer; Intel® WiDi Software; Microsoft Security Essentials (models with Windows 7 only); Skype for Business Optimized; For a complete list of preinstalled software, please refer to the quick spec document for this product. <sup>7,8,9,10,11,12,13,14,15</sup>
<b>Security Management</b>	TPM 1.2/2.0 (Infineon, soldered down); Preboot Authentication (Password) <sup>16</sup>
<b>Power</b>	45 W Smart USB Type-C™ AC adapter HP Long Life 4-cell, 38 WHr Li-ion polymer
<b>Dimensions</b>	29.2 x 20.9 x 1.19 cm (non-touch); 29.2 x 20.9 x 1.24 cm (touch)
<b>Environmental</b>	Low halogen <sup>17</sup>
<b>Energy Efficiency Compliance</b>	ENERGY STAR® certified configurations available
<b>Warranty</b>	3-year limited warranty (optional Care Packs available, sold separately), 3-year limited warranty on HP Long Life Battery (available only with the 3-year limited platform warranty)

## HP EliteBook Folio G1 Notebook PC

### Accessories and services (not included)

---

HP UltraBook 12.5-inch Sleeve



Pack your Ultrabook™ to go with an HP Ultrabook Sleeve, a stylish, durable, and compact sleeve case designed to help protect your notebook and maintain its sleek profile.

**Product number: F7Z98AA**

---

HP 2.4 GHz Wireless Keyboard and Mouse

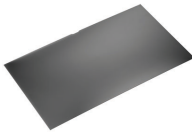


Work smarter with your notebook, tablet or all-in-one by adding the HP 2.4 GHz Keyboard and Mouse for fast and easy data entry, Web navigation, and document scrolling.

**Product number: G1K29AA**

---

HP 12.5-in Privacy Filter



Help protect your notebook data from prying eyes with a privacy filter.

**Product number: J6E64AA**

---

HP UltraThin Wireless Mouse



Boost your productivity in style with the HP Ultrathin Wireless Mouse, a super-thin, super-sleek Bluetooth® mouse.

**Product number: L9V78AA**

---

HP Elite Thunderbolt 3 65W Dock



Create a remarkably powerful and streamlined workspace without the clutter with the HP Thunderbolt 3 Dock. Available in 3 options dependant on your notebook requirements. Get expansive device, display, and network connectivity plus simultaneous charging of your system through one simple cable from the dock to your HP EliteBook.

**Product number: P5Q54AA**

---

HP 5year Next Business Day Onsite Notebook Only HW Support



Our support specialists are always ready to assist in whatever way the situation calls for, whether it's remotely over the phone or in person.

**Product number: U7861E**

---

Learn more at  
[www.hp.eu/hpoptions](http://www.hp.eu/hpoptions)

# HP EliteBook Folio G1 Notebook PC

## Messaging Footnotes

<sup>1</sup> Not all features are available in all editions or versions of Windows. Systems may require upgraded and/or separately purchased hardware, drivers, software or BIOS update to take full advantage of Windows functionality. Windows 10 is automatically updated, which is always enabled. ISP fees may apply and additional requirements may apply over time for updates. See <http://www.microsoft.com>.

<sup>2</sup> MIL-STD testing is not intended to demonstrate fitness for U.S. Department of Defense contract requirements or for military use. Test results are not a guarantee of future performance under these test conditions. Damage under the MIL STD test conditions or any accidental damage requires an optional HP Accidental Damage Protection Care Pack.

<sup>3</sup> Dynamic Protection monitors and corrects BIOS every 15 minutes.

<sup>4</sup> Multi-Core is designed to improve performance of certain software products. Not all customers or software applications will necessarily benefit from use of this technology. Performance and clock frequency will vary depending on application workload and your hardware and software configurations. Intel's numbering is not a measurement of higher performance.

<sup>5</sup> Sold separately or as an optional feature.

## Technical specifications disclaimers

<sup>1</sup> Not all features are available in all editions or versions of Windows. Systems may require upgraded and/or separately purchased hardware, drivers, software or BIOS update to take full advantage of Windows functionality. Windows 10 is automatically updated, which is always enabled. ISP fees may apply and additional requirements may apply over time for updates. See <http://www.microsoft.com>.

<sup>2</sup> Multicore is designed to improve performance of certain software products. Not all customers or software applications will necessarily benefit from use of this technology. Performance and clock frequency will vary depending on application workload and your hardware and software configurations. Intel's numbering is not a measurement of higher performance.

<sup>3</sup> Some vPro functionality of this technology, such as Intel® Active management technology and Intel Virtualization technology, requires additional 3rd party software in order to run. Availability of future "virtual appliances" applications for Intel vPro technology is dependent on 3rd party software providers. Microsoft Windows required.

<sup>4</sup> For storage drives, GB = 1 billion bytes. Actual formatted capacity is less. Up to 30 GB (for Windows 7 and 10) is reserved for system recovery software.

<sup>5</sup> Wireless requires wireless access point and Internet service. Availability of public wireless access points limited.

<sup>6</sup> HD content required to view HD images.

<sup>7</sup> BIOSphere features may vary.

<sup>8</sup> The Wireless Hotspot application requires an active internet connection and separately purchased data plan. While HP Wireless Hotspot is active, on-device applications will continue to work and will use the same data plan as the wireless hotspot. Wireless Hotspot data usage may incur additional charges. Check with your plan details. Requires Windows.

<sup>9</sup> HP Mobile Connect is available in select EMEA countries and requires prepaid service purchase. Find coverage and availability for your service area at [www.hp.com/go/mobileconnect](http://www.hp.com/go/mobileconnect).

<sup>10</sup> HP Support Assistant requires Windows.

<sup>11</sup> ePrint requires an Internet connection to HP web-enabled printer. HP ePrint account registration required. For a list of eligible printers, supported documents and image types, and for complete details, see [www.hp.com/go/businessmobileprinting](http://www.hp.com/go/businessmobileprinting).

<sup>12</sup> Absolute subscription required, see <http://www.absolute.com/landing/2012/computrace-hp> for complete details. Absolute Data Protect agent is shipped turned off, and must be activated by customers. Service may be limited, check with Absolute for availability outside the U.S. The optional subscription service of Absolute Recovery Guarantee is a limited warranty. Certain conditions apply. For full details visit: <http://www.absolute.com/company/legal/agreements/computrace-agreement>. If Data Delete is utilized, the Recovery Guarantee payment is null and void. In order to use the Data Delete service, customers must first sign a Pre-Authorization Agreement and either create a PIN or purchase one or more RSA SecurID tokens from Absolute Software.

<sup>13</sup> File Sanitizer: For the use cases outlined in the DOD 5220.22-M Supplement. Does not support Solid State Drives (SSDs). Initial setup required. Web history deleted only in Internet Explorer and Firefox browsers and must be user enabled. With Windows 8.1, user must turn off Enhanced Protection Mode in IE11 for shred on browser close feature.

<sup>14</sup> Integrated Intel WiDi software is available and requires separately purchased projector, TV or computer monitor with an integrated or external WiDi receiver. External WiDi receivers connect to the projector, TV or computer monitor via a standard VGA, HDMI cable, also sold separately.

<sup>15</sup> Skype for Business subscription required.

<sup>16</sup> This product ships with TPM 1.2 with option to upgrade to TPM 2.0. Upgrade utility is expected to be available by the end of 2015 via HP Customer Support.

<sup>17</sup> External power supplies, power cords, cables and peripherals are not low halogen. Service parts obtained after purchase may not be low halogen.

## Learn more at

[www.hp.eu/notebooks](http://www.hp.eu/notebooks)

## Engage HP Financial Services

Explore monthly payment options and technology refresh plans that can provide more flexibility to help you meet your IT goals. More information on [www.hp.com/go/hpfs](http://www.hp.com/go/hpfs).

## Sign up for updates

[www.hp.com/go/getupdated](http://www.hp.com/go/getupdated)

© Copyright 2016 HP Development Company, L.P. The information contained herein is subject to change without notice. The only warranties for HP products and services are set forth in the express warranty statements accompanying such products and services. Nothing herein should be construed as constituting an additional warranty. HP shall not be liable for technical or editorial errors or omissions contained herein.

Bluetooth is a trademark of its proprietor and used by HP Inc. under license. Intel, Core and vPro are trademarks of Intel Corporation in the U.S. and other countries. USB Type-C™ and USB-C™ are trademarks of USB Implementers Forum. ENERGY STAR is a registered trademark of the U.S. Environmental Protection Agency. All other trademarks are the property of their respective owners.

4AA6-3224EEE, March 2016

