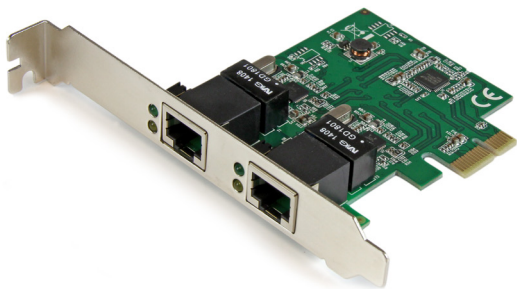


## 2 Port PCI Express Gigabit Ethernet Network Card

ST1000SPEXD4



\*actual product may vary from photos

DE: Bedienungsanleitung - [de.startech.com](http://de.startech.com)

FR: Guide de l'utilisateur - [fr.startech.com](http://fr.startech.com)

ES: Guía del usuario - [es.startech.com](http://es.startech.com)

IT: Guida per l'uso - [it.startech.com](http://it.startech.com)

NL: Gebruiksaanwijzing - [nl.startech.com](http://nl.startech.com)

PT: Guia do usuário - [pt.startech.com](http://pt.startech.com)

For the most up-to-date information, please visit: [www.startech.com](http://www.startech.com)

## FCC Compliance Statement

This equipment has been tested and found to comply with the limits for a Class B digital device, pursuant to part 15 of the FCC Rules. These limits are designed to provide reasonable protection against harmful interference in a residential installation. This equipment generates, uses and can radiate radio frequency energy and, if not installed and used in accordance with the instructions, may cause harmful interference to radio communications. However, there is no guarantee that interference will not occur in a particular installation. If this equipment does cause harmful interference to radio or television reception, which can be determined by turning the equipment off and on, the user is encouraged to try to correct the interference by one or more of the following measures:

- Reorient or relocate the receiving antenna.
- Increase the separation between the equipment and receiver.
- Connect the equipment into an outlet on a circuit different from that to which the receiver is connected.
- Consult the dealer or an experienced radio/TV technician for help

This device complies with part 15 of the FCC Rules. Operation is subject to the following two conditions: (1) This device may not cause harmful interference, and (2) this device must accept any interference received, including interference that may cause undesired operation.

Changes or modifications not expressly approved by StarTech.com could void the user's authority to operate the equipment.

## Industry Canada Statement

This Class B digital apparatus complies with Canadian ICES-003.

Cet appareil numérique de la classe [B] est conforme à la norme NMB-003 du Canada.

CAN ICES-3 (B)/NMB-3(B)

## Use of Trademarks, Registered Trademarks, and other Protected Names and Symbols

This manual may make reference to trademarks, registered trademarks, and other protected names and/or symbols of third-party companies not related in any way to StarTech.com. Where they occur these references are for illustrative purposes only and do not represent an endorsement of a product or service by StarTech.com, or an endorsement of the product(s) to which this manual applies by the third-party company in question. Regardless of any direct acknowledgement elsewhere in the body of this document, StarTech.com hereby acknowledges that all trademarks, registered trademarks, service marks, and other protected names and/or symbols contained in this manual and related documents are the property of their respective holders.

# Table of Contents

<b>Introduction</b> .....	<b>1</b>
Packaging Contents .....	1
System Requirements.....	1
<b>Installation</b> .....	<b>1</b>
Hardware Installation .....	1
Software Installation.....	2
Verifying Installation.....	2
<b>Specifications</b> .....	<b>4</b>
<b>Technical Support</b> .....	<b>6</b>
<b>Warranty Information</b> .....	<b>6</b>

# Introduction

## Packaging Contents

- 1x PCIe Network Card
- 1x Low Profile Bracket
- 1x Driver CD
- 1x Instruction Manual

## System Requirements

- Available PCI Express slot
- Windows® 8.1 / 8 (32/64bit), 7 (32/64), Vista(32/64), XP(32/64), 2000, Windows® Server 2012, 2008 R2, 2003(32/64), Mac OS 10.4 and up (Tested up to 10.10), Linux 2.4.x and up (Tested up to 3.5)

# Installation

## Hardware Installation

**WARNING!** PCI Express cards, like all computer equipment, can be severely damaged by static electricity. Be sure that you are properly grounded before opening your computer case or touching your card. StarTech.com recommends that you wear an anti-static strap when installing any computer component. If an anti-static strap is unavailable, discharge yourself of any static electricity build-up by touching a large grounded metal surface (such as the computer case) for several seconds. Also be careful to handle the card by its edges and not the gold connectors.

1. Turn your computer off and any peripherals connected to the computer (i.e. Printers, external hard drives, etc.). Unplug the power cable from the rear of the power supply on the back of the computer and disconnect all peripheral devices.
2. Remove the cover from the computer case. See documentation for your computer system for details.
3. Locate an open PCI Express slot and remove the metal cover plate on the rear of the computer case (Refer to documentation for your computer system for details.). Note that this card will work in PCI Express slots of additional lanes (i.e. x4, x8 or x16 slots).
4. Insert the card into the open PCI Express slot and fasten the bracket to the rear of the case.

**NOTE:** If installing the card into a low profile desktop system, replacing the preinstalled standard profile bracket with the included low profile (half height) installation bracket may be necessary.

5. Place the cover back onto the computer case.
6. Insert the power cable into the socket on the power supply and reconnect all other connectors removed in Step 1.

## Software Installation

### Windows 8 / Server 2012

Upon starting Windows with the card installed, Windows should auto-install using native drivers.

### Windows 7 / Server 2008 R2 and earlier

1. Upon starting Windows, if the Found New Hardware wizard appears on the screen, cancel/close the window and insert the included Driver CD into your CD/DVD drive.
2. Browse to the "Realtek\RTL8111\" folder on the disc, then select the appropriate folder for the version of Windows you are using.
3. Run the **Setup.exe** application to start the install.
4. Follow the on-screen instructions to complete the installation.

**NOTE:** You may be prompted to restart once the install completes.

### Mac OS

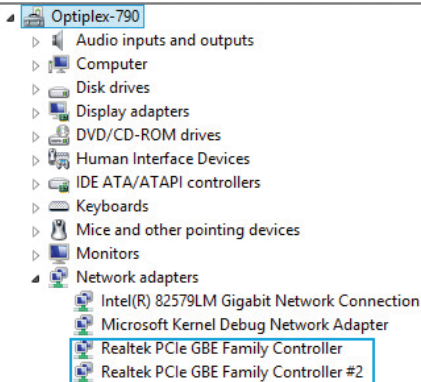
1. Insert the provided CD into your DVD/CD-ROM drive.
2. Browse to the "Realtek\RTL8111\Mac\_OS" folder on the disc, then select the appropriate folder for the version of Mac OS you are using.
3. Run the **RTGNICvxxx.mpkg** application to start the install.
4. Follow the on-screen instructions to complete the installation.

**NOTE:** You may be prompted to restart once the install completes.

## Verifying Installation

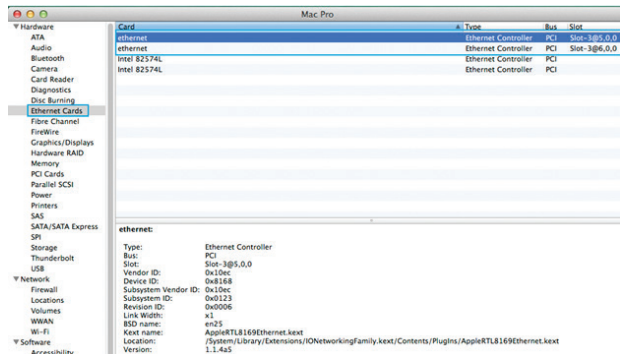
### Windows

1. Open the Device Manager by right-clicking on **Computer**, and then select **Manage**. In the new Computer Management window, select **Device Manager** from the left window panel (For Windows 8, open the **Control Panel** and select **Device Manager**).
2. Expand the "Network Adapters" section. On a successful install, you should see the following devices in the list with no exclamation points or question marks.



## Mac OS

1. Open the System Profiler by clicking the Apple symbol in the top left corner, selecting **About this Mac**, then select **System Report** (Or **More Info**, depending on the version of Mac OS you are using).
2. Expand the "Hardware" section and click "Ethernet Cards" in the left column. With the adapter connected, you should see the following device in the list.



# Specifications

<b>Ports</b>	2
<b>Interface</b>	RJ-45 (Gigabit Ethernet)
<b>Bus Type</b>	PCI Express
<b>Card Type</b>	Standard Profile (LP bracket incl.)
<b>Port Style</b>	Integrated on Card
<b>Industry Standards</b>	IEEE 802.3, IEEE 802.3u, IEEE 802.3ab PCI Express Base Specification 2.0
<b>Chipset</b>	Realtek - RTL8111E ASMedia - ASM1182e
<b>Connector(s)</b>	1 x PCI Express x1 2 x RJ-45 Female
<b>Maximum Data Transfer</b>	2000 Mbps (full-duplex), 1000 Mbps (half-duplex)
<b>Compatible Networks</b>	10/100/1000 Mbps
<b>Auto MDIX</b>	Yes
<b>Full Duplex Support</b>	Yes
<b>Supported Protocols</b>	IEEE 802.1q VLAN tagging, IEEE 802.1p Layer 2 Priority Encoding and IEEE 802.3x Full Duplex Flow Control
<b>Operating Temperature</b>	0°C to 70°C (32°F to 158°F)
<b>Storage Temperature</b>	0°C to 100°C (32°F to 212°F)
<b>Humidity</b>	10~90% RH
<b>Dimensions</b>	92.6 x 18 x 120 mm
<b>Weight</b>	54 g

## Compatible Operating Systems

Windows® 8.1 / 8 (32/64bit), 7 (32/64),  
Vista(32/64), XP(32/64), 2000

Windows® Server 2012, 2008 R2,  
2003(32/64)

Mac OS 10.4 and up (Tested up to 10.10)

Linux 2.4.x and up (Tested up to 3.5)



# Technical Support

StarTech.com's lifetime technical support is an integral part of our commitment to provide industry-leading solutions. If you ever need help with your product, visit [www.startech.com/support](http://www.startech.com/support) and access our comprehensive selection of online tools, documentation, and downloads.

For the latest drivers/software, please visit [www.startech.com/downloads](http://www.startech.com/downloads)

## Warranty Information

This product is backed by a two year warranty.

In addition, StarTech.com warrants its products against defects in materials and workmanship for the periods noted, following the initial date of purchase. During this period, the products may be returned for repair, or replacement with equivalent products at our discretion. The warranty covers parts and labor costs only. StarTech.com does not warrant its products from defects or damages arising from misuse, abuse, alteration, or normal wear and tear.

### Limitation of Liability

In no event shall the liability of StarTech.com Ltd. and StarTech.com USA LLP (or their officers, directors, employees or agents) for any damages (whether direct or indirect, special, punitive, incidental, consequential, or otherwise), loss of profits, loss of business, or any pecuniary loss, arising out of or related to the use of the product exceed the actual price paid for the product. Some states do not allow the exclusion or limitation of incidental or consequential damages. If such laws apply, the limitations or exclusions contained in this statement may not apply to you.

Hard-to-find made easy. At StarTech.com, that isn't a slogan. It's a promise.

StarTech.com is your one-stop source for every connectivity part you need. From the latest technology to legacy products — and all the parts that bridge the old and new — we can help you find the parts that connect your solutions.

We make it easy to locate the parts, and we quickly deliver them wherever they need to go. Just talk to one of our tech advisors or visit our website. You'll be connected to the products you need in no time.

Visit [www.startech.com](http://www.startech.com) for complete information on all StarTech.com products and to access exclusive resources and time-saving tools.

*StarTech.com is an ISO 9001 Registered manufacturer of connectivity and technology parts. StarTech.com was founded in 1985 and has operations in the United States, Canada, the United Kingdom and Taiwan servicing a worldwide market.*