

ICUSB232DB25

Instruction Manual

USB Serial Adapter

USB to RS232 DB9 or DB25
Serial Adapter Cable
- Male/Male

StarTech.com 
Making hard-to-find easy![®]

FCC Compliance Statement

This equipment has been tested and found to comply with the limits for a Class B digital device, pursuant to part 15 of the FCC Rules. These limits are designed to provide reasonable protection against harmful interference in a residential installation. This equipment generates, uses and can radiate radio frequency energy and, if not installed and used in accordance with the instructions, may cause harmful interference to radio communications. However, there is no guarantee that interference will not occur in a particular installation. If this equipment does cause harmful interference to radio or television reception, which can be determined by turning the equipment off and on, the user is encouraged to try to correct the interference by one or more of the following measures:

- Reorient or relocate the receiving antenna.
- Increase the separation between the equipment and receiver.
- Connect the equipment into an outlet on a circuit different from that to which the receiver is connected.
- Consult the dealer or an experienced radio/TV technician for help.

Use of Trademarks, Registered Trademarks, and other Protected Names and Symbols

This manual may make reference to trademarks, registered trademarks, and other protected names and/or symbols of third-party companies not related in any way to StarTech.com. Where they occur these references are for illustrative purposes only and do not represent an endorsement of a product or service by StarTech.com, or an endorsement of the product(s) to which this manual applies by the third-party company in question. Regardless of any direct acknowledgement elsewhere in the body of this document, StarTech.com hereby acknowledges that all trademarks, registered trademarks, service marks, and other protected names and/or symbols contained in this manual and related documents are the property of their respective holders.

Table of Contents

- Introduction 1**
 - Packaging Contents 1
 - System Requirements 1
- Installation 2**
 - Driver Installation 2
 - Hardware Installation 2
 - Verifying Installation 2
- Specifications 3**
- Technical Support 4**
- Warranty Information 4**

Introduction

The StarTech.com USB to RS232 DB9 or DB25 Serial Adapter Cable lets you add an RS232 serial port to a notebook or desktop computer through Plug and Play USB. This 3ft USB to RS232 Serial Adapter Cable lets you connect 9-pin or 25-pin (through included adapter) RS232 serial devices to bridge the compatibility gap between modern computers without serial ports and legacy serial peripherals. A cost-effective solution that is backed by StarTech.com's 1-year warranty.

Packaging Contents

- 1 x ICUSB232DB25 adapter cable
- 1 x DB9 to DB25 Adapter
- 1 x Driver Installation CD
- 1 x Instruction Manual

System Requirements

- USB enabled computer system with available USB port
- Microsoft® Windows® XP/Server 2003/Vista/Server 2008 R2/7 (32/64-bit), or Windows XP Embedded/CE 4.2/5.2, or Windows Mobile 5/6, or PocketPC 2003, or Apple® Mac OS® 10.1 or later, or Linux®



Installation

Driver Installation

Windows XP/Server 2003/Vista/Server 2008 R2/7

1. Turn the computer on and boot into Windows. Do not have the USB adapter plugged into the computer.
2. Insert the Driver CD into your CD/DVD drive. If AutoPlay runs, then choose to “Browse the CD”, otherwise access the contents of the CD via “My Computer”.
3. In the “Prolific/PL2303X” location, open the appropriate folder for your operating system and run the setup.exe file. This will launch the driver installation wizard.
4. Once the installation wizard completes, the drivers will be installed and ready for use.

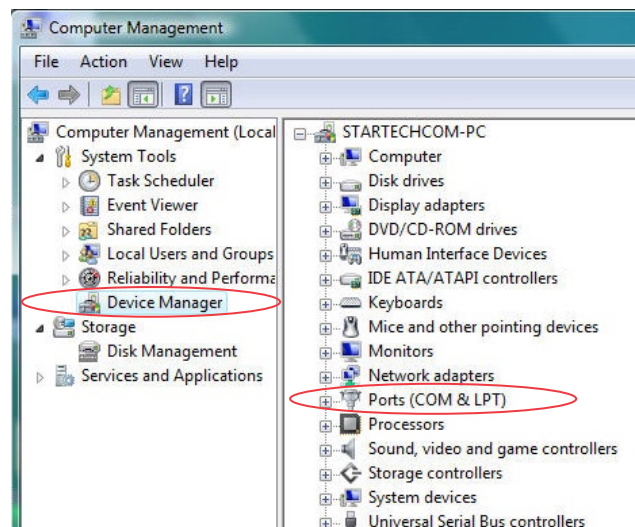
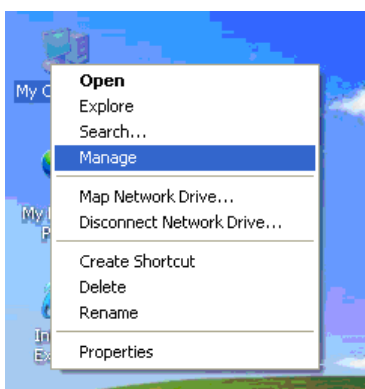
Hardware Installation

1. Make sure the driver installation has been completed first.
2. Plug the USB adapter into an available USB port on the computer system.
3. Windows will automatically detect the USB adapter and install the drivers.
4. Once installation is complete, the serial port will be ready for use.
5. If connecting the serial port to a DB25 interface, use the included DB9 to DB25 (male) adapter.

Verifying Installation

Windows XP/Server 2003/Vista/Server 2008 R2/7

From the main desktop, right-click on “My Computer” (“Computer” in Vista/7), then select Manage. In the new Computer Management window, select Device Manager from the left window panel.



Double-click on the “Ports (COM & LPT)” option. The additional COM port should be visible.

Specifications

Bus Interface	USB 2.0
Chipset ID	Prolific PL2302HXD
Connectors	1 x 9-pin DB9 male 1 x USB type A male
Supported Protocols	RS232
Maximum Data Transfer Rate	230Kbps
FIFO Buffer	512B
Integrated Cable Length	90cm/3ft
Operating Temperature	0°C ~ 60°C (32°F ~ 140°F)
Storage Temperature	-20°C ~ 80°C (-4°F ~ 176°F)
Humidity	0 ~ 90% RH
Compatible Operating Systems	Windows XP/Server 2003/Vista/Server 2008 R2/7 (32/64-bit), Windows XP Embedded/CE 4.2/5.2, Windows Mobile 5/6, PocketPC 2003, Mac OS 10.1 or later, Linux

Technical Support

StarTech.com's lifetime technical support is an integral part of our commitment to provide industry-leading solutions. If you ever need help with your product, visit www.startech.com/support and access our comprehensive selection of online tools, documentation, and downloads.

Warranty Information

This product is backed by a one year warranty.

In addition, StarTech.com warrants its products against defects in materials and workmanship for the periods noted, following the initial date of purchase. During this period, the products may be returned for repair, or replacement with equivalent products at our discretion. The warranty covers parts and labor costs only. StarTech.com does not warrant its products from defects or damages arising from misuse, abuse, alteration, or normal wear and tear.

Limitation of Liability

In no event shall the liability of StarTech.com Ltd. and StarTech.com USA LLP (or their officers, directors, employees or agents) for any damages (whether direct or indirect, special, punitive, incidental, consequential, or otherwise), loss of profits, loss of business, or any pecuniary loss, arising out of or related to the use of the product exceed the actual price paid for the product. Some states do not allow the exclusion or limitation of incidental or consequential damages. If such laws apply, the limitations or exclusions contained in this statement may not apply to you.



StarTech.com has been making “hard-to-find easy” since 1985, providing high quality solutions to a diverse IT and A/V customer base that spans many channels, including government, education and industrial facilities to name just a few. We offer an unmatched selection of computer parts, cables, A/V products, KVM and Server Management solutions, serving a worldwide market through our locations in the United States, Canada, the United Kingdom and Taiwan.

Visit **www.startech.com** today for complete information about all our products and to access exclusive interactive tools such as the Cable Finder, Parts Finder and the KVM Reference Guide.