



Plustek MobileOffice S410

An ideal mobile solution for all kind of documents!

MobileOffice S410 is Plustek's newest addition for ultra-portable document imaging scanning solution! It designed to capture critical documents quickly at the source, reducing business cycle times and improving payment times. Using the **MobileOffice S410** Scanner, documents and receipts can be scanned at their source in minutes. In addition, errors normally caused by manual data entry or lost documents are reduced and mailing costs can be eliminated.

MobileOffice S410 can scan documents to Evernote and photos to Google Picasa by simply pressing a button, users can view their scanned images at anywhere at any time! **MobileOffice S410** also included software document management and Optical Character Recognition software suite allows you to easily scan and manage your docu-

ments. DocAction single touch scanning and industry standard TWAIN drivers ensure compatibility with thousands of scanning and imaging programs including: document management, healthcare ERM, financial, and thousands of other image enabled applications. These features make the **MobileOffice S410** a powerful document management solution to meet any requirement.

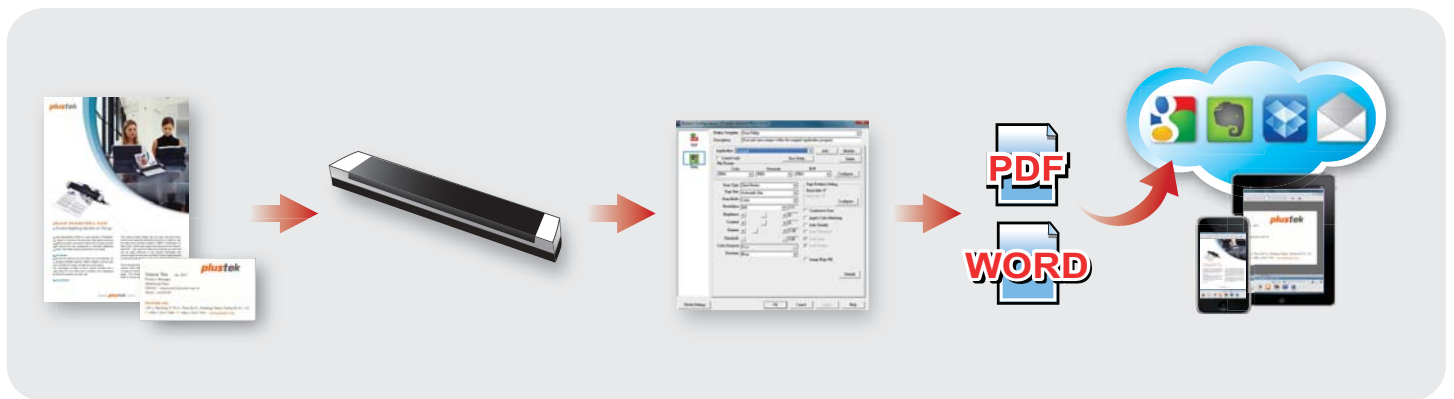
Designed with the reliability demanded by business users, and a price point attractive to home users, this second generation mobile scanner is powered by the USB bus and does not require external power. With the touch of a button the user can scan to a PC, laptop or netbook, in-office, at the airport, at a customer's site or on the road at a scanning speed of 6 pages per minute.

Plustek MobileOffice S410

An ideal mobile solution for all kind of documents!

Key Features

- USB powered only for energy conservation
- Scan to Evernote and Google Picasa, able to view your document at anytime anywhere
- Automatically upload your business card information to your designated file
- Searchable PDF file format available, make the file searching more easy
- Scan rigid embossed cards such as licenses, insurance cards, membership cards, credit cards...etc
- 2 Single-touch buttons to make the scanning easy and efficiency
- Fast scanning speed only need 9 seconds to scan an A4 size paper (9sec / page @ Color Mode, 300 dpi, A4)
- Advanced image enhancement which automatically straightens and rotates pages, adjust brightness, and crop images to minimize file size. This saves lots of after initial scanning work



Software Bundled



System Requirements

- Pentium® IV 2.0 GHz processor
- CD-ROM Driver
- One available USB 2.0 Port
- 512 MB RAM (1GB or higher recommended)
- 800 MB free HDD space (1 GB or larger recommended)
- High Color graphic card (VGA or higher)
- Windows 2000, XP, Vista, 7

Specification

Image Sensor	CIS
Optical Resolution	600 dpi
Hardware Resolution	600 x 600 dpi
Scan Modes	Color: 48-bit Input; 24-bit Output Grayscale: 16-bit Input; 8-bit Output B/W: 1-bit
Scanning Speed	9 seconds (Color, 300 dpi, A4)
Scanning Area (W x L)	Maximum: 216 x 910 mm (8.5" x 36") Minimum: 12.7 x 12.7 mm (0.5" x 0.5")
Acceptable Paper Sizes (W x L)	Maximum: 216 x 910 mm (8.5" x 36") Minimum: 50.8 x 50.8 mm (2" x 2")
Acceptable Paper Weight (Thickness)	Paper: 50 g/m ² to 120 g/m ² Plastic card: Non-Embossed up to 0.76 mm & Embossed up to 1.24 mm (ISO 7810)
Action Button	PDF, Scan
Interface	USB 2.0
Net Weight	0.41 Kgs (0.91 Lbs)
Dimensions (W x D x H)	295 x 50 x 40.5 mm (11.61" x 1.97" x 1.59")
Protocol	TWAIN Compliant
OS	Windows 2000 / XP / Vista / 7

Headquarters: sales@plustek.com



© 2012 by Plustek Inc. All rights reserved. All registered trademarks are the property of their respective owners.