

# ASUS ZENBOOK<sup>™</sup>

Incredible Beauty

Incredible Performance

Incredible Audio



## Asus Consumer Product List

January 2012

 **SonicMaster**

# Asus Consumer Product List

January 2012

## 15' MULTIMEDIA

K53U-SX168V  
X54H-S0180V  
K53E-SX961V  
K53E-SX962V  
K53E-SX963V  
K53SC-SX307V  
N55SF-S2342V

## 17' MULTIMEDIA

K73E-TY128V  
K73E-TY040V  
N73SV-TZ193V

## PROFESSIONAL

P53E-S0102X  
P53E-S0057X  
B53E-S0123X

## ULTRA PORTABLE

U36SG-RX107X  
U46SV-WX044X

## ZENBOOK

UX21E-KX004V

## LAMBORGHINI

VX7-SZ058Z

## GAMING

G53SW-IX097Z  
G53SX-IX122V  
G74SX-91131Z

## ACCESSORIES

BAG / MOUSE

15' Multimedia

# Data Sheet - **ASUS K53U**

## The Perfect Fit for Work and Play

### Classy Metallic Design

The highly durable premium aluminum textures retain their looks and quality even during extensive, prolonged use, allowing you to do more with your K53 Series in complete confidence.

### IceCool Technology Keeps Your Hands Cool

IceCool Technology makes your PC experience cool and comfortable even during the longest computing sessions. Exclusive dual-sided motherboard design places hot components on the underside and away from users. Combined with heat pipes and vents, palm rests and typing surfaces stay cooler.

### Palm Proof Technology Prevents Accidental Input

Intelligent touchpad distinguishes between palm and finger contact to prevent inadvertent cursor movements during typing.



### K53U-SX168V

CPU	AMD® Fusion APU E-450 (1.6GHz)
OS	Genuine Windows® 7 Home Premium 64bit
Panel	15.6" HD TFT (1366x768, Color-Shine)
Graphics	AMD Radeon® HD 6310
HDD	320GB (5400rpm)
Memory	3G (2048x1, 1024x1)
Type	DDRIII 1066
ODD	DVD Super Multi Dual Layer
Speaker	Built-in Speakers And Microphone SonicFocus Altec Lansing® Speakers
PC Card Slot	4 -in-1 card reader (SD/MS/MS Pro/MMC)
I/O Port	1 x Microphone-in jack 1 x Headphone-out jack 1 x VGA port/Mini D-sub 15-pin for external monitor 3 x USB 2.0 port(s) 1 x RJ45 LAN Jack for LAN insert 1 x HDMI
LAN	10/100/1000 Mbps
WLAN	802.11 BGN
Webcam	Yes
Numeric Keypad	Yes
Software	ASUSDVD 6-in-1 Adobe Acrobat Reader 9.0 Trend Micro Internet Security 2010 ASUS SmartLogon Asus Power4Gear Hybrid Asus Live Update Asus Multi-Frame ASUS Wireless Console Virtual Camera ASUS Splendid Asus Screen Saver Fancy Start eManual AI Recovery ASUS FastBoot ControlDeck
Battery	6 cell
Warranty	1 year global
Dimension	37.8 x 25.3 x 2.83 ~ 3.49 cm (WxDxH)
Weight	2.60 kg (with 6 cell battery)
Colour	Brown

 **SonicMaster**

# Data Sheet - X54H

## The Perfect Fit for Work and Play

### Immersive Multimedia Experience

The ASUS X Series notebooks deliver an immersive multimedia experience through its high definition LED panel and Altec Lansing® speakers with SonicFocus software fine-tuning. Your ASUS X Series notebooks can also connect to HDMI-compatible TVs, consoles and entertainment systems.

### IceCool Technology Keeps Your Hands Cool

Exclusive dual-sided motherboard design places hot components on the underside and away from users. Combined with heatpipes and vents, palm rests and typing surfaces stay cooler than the body temperature so they're cool even during the longest computing sessions.

### Go Faster

Now included is USB 3.0 for up to ten times the speed of USB 2.0, so all your files and content can be handled and backed up expediently. Say goodbye to long frustrating waits, even a 25GB Blu-ray movie takes a mere 70 seconds to process.

### Palm Proof Technology Prevents Accidental Input

Intelligent touchpad distinguishes between palm and finger contact to prevent inadvertent cursor movements during typing.



## X54H-SO180V

Processor	Intel® Celeron® B800 (1.5GHz)
OS	Genuine Windows® 7 Home Premium 64bit
Display	15.6" HD TFT (1366x768, Color-Shine)
Graphic Card	Integrated Intel® GMA HD
Storage	500GB (5400rpm)
Memory	4G (2048x2)
Type	DDRIII 1066
ODD	DVD Super Multi Dual Layer
Wireless	802.11 BGN
LAN	10/100/1000 Mbps
Webcam	Yes
Battery	4 cell
Warranty	1 year global
Keyboard	Numeric
Card Reader	4 -in-1 card reader ( SD/ MS/ MS Pro/ MMC)
Interface	1 x Microphone-in jack 1 x Headphone-out jack (SPDIF) 1 x VGA port/Mini D-sub 15-pin for external monitor 2 x USB 2.0 port(s) 1 x RJ45 LAN Jack for LAN insert
Audio	Built-in speakers and microphone Altec Lansing® speakers
LED Status Indicator	HDD Power-on/Suspend Capital Lock Wireless on status indicator Bluetooth on status indicator
Software	ASUSDVD 6-in-1 ASUS Win flash for BIOS and Driver live Update ASUS SmartLogon ASUS Net 4 switch ASUS Live Update ASUS Multi-Frame ASUS NB Probe + ASUS Wireless Console ASUS Data Security Management(ADSM) Virtual Camera ASUS Splendid ASUS Express Gate ASUS Screen Saver Fancy Start eManual AI Recovery
Dimension & weight	37.8 x 25.3 x 3.56 ~ 3.72 cm (WxDxH) 2.60 kg (with 4 cell battery)
Colour	Black (Matte)



asus.co.uk

© ASUS 2008. All Rights Reserved. ASUS, ASUS Advantage and ASUS Green are trade marks or registered trade marks of ASUS Computers in Taiwan, other countries or both. Models pictured are for illustration purposes only and may not correspond to advertised product specifications. All trademarks and registered names are the property of respective owners. Offers are for business customers only and are subject to availability. Product specifications may be modified at any time without notice. ASUS is not responsible for typographical or photographic errors. Information advertised has no contractual effect.

**ASUS**  
Inspiring Innovation • Persistent Perfection

# Data Sheet - **ASUS K53E**

## The Perfect Fit for Work and Play

### Classy Metallic Design

The highly durable premium aluminum textures retain their looks and quality even during extensive, prolonged use, allowing you to do more with your K53 Series in complete confidence.

### IceCool Technology Keeps Your Hands Cool

IceCool Technology makes your PC experience cool and comfortable even during the longest computing sessions. Exclusive dual-sided motherboard design places hot components on the underside and away from users. Combined with heat pipes and vents, palm rests and typing surfaces stay cooler.

### Palm Proof Technology Prevents Accidental Input

Intelligent touchpad distinguishes between palm and finger contact to prevent inadvertent cursor movements during typing.



### K53E-SX961V

CPU	Intel® Pentium® B950 (2.1GHz)
OS	Genuine Windows® 7 Home Premium 64bit
Panel	15.6" HD TFT (1366x768, Color-Shine)
Graphics	Integrated Intel® GMA HD
HDD	500GB (5400rpm)
Memory	6G (2048x1, 4096x1)
Type	DDRIII 1066
ODD	DVD Super Multi Dual Layer
Speaker	Built-in speakers and microphone Altec Lansing® speakers
PC Card Slot	4 -in-1 card reader (SD/ MS/ MS Pro/ MMC)
I/O Port	1 x Microphone-in jack 1 x Headphone-out jack 1 x VGA port/Mini D-sub 15-pin for external monitor 3 x USB 2.0 port(s) 1 x RJ45 LAN Jack for LAN insert 1 x HDMI
LAN	10/100/1000 Mbps
WLAN	802.11 BGN
Webcam	Yes
Numeric Keypad	Yes
Software	ASUSDVD 6-in-1 Adobe Acrobat Reader 9.0 Trend Micro Internet Security 2010 ASUS SmartLogon Asus Power4Gear Hybrid Asus Live Update Asus Multi-Frame ASUS Wireless Console Virtual Camera ASUS Splendid Asus Screen Saver Fancy Start eManual AI Recovery ASUS FastBoot ControlDeck
Battery	6 cell
Warranty	1 year global
Dimension	37.8 x 25.3 x 2.83 ~ 3.49 cm (WxDxH)
Weight	2.60 kg (with 6 cell battery)
Colour	Brown (Matte Metallic)

# Data Sheet - ASUS K53E

## The Perfect Fit for Work and Play

### Classy Metallic Design

The highly durable premium aluminum textures retain their looks and quality even during extensive, prolonged use, allowing you to do more with your K53 Series in complete confidence.

### IceCool Technology Keeps Your Hands Cool

IceCool Technology makes your PC experience cool and comfortable even during the longest computing sessions. Exclusive dual-sided motherboard design places hot components on the underside and away from users. Combined with heat pipes and vents, palm rests and typing surfaces stay cooler.

### Palm Proof Technology Prevents Accidental Input

Intelligent touchpad distinguishes between palm and finger contact to prevent inadvertent cursor movements during typing.



### K53E-SX962V

CPU	Intel® Core™ i3-2330M (2.2GHz)
OS	Genuine Windows® 7 Home Premium 64bit
Panel	15.6" HD TFT (1366x768, Color-Shine)
Graphics	Integrated Intel® GMA HD
HDD	500GB (5400rpm)
Memory	6G (2048x1, 4096x1)
Type	DDRIII 1066
ODD	DVD Super Multi Dual Layer
Speaker	Built-in speakers and microphone Altec Lansing® speakers
PC Card Slot	4 -in-1 card reader ( SD/ MS/ MS Pro/ MMC)
I/O Port	1 x Microphone-in jack 1 x Headphone-out jack 1 x VGA port/Mini D-sub 15-pin for external monitor 3 x USB 2.0 port(s) 1 x RJ45 LAN Jack for LAN insert 1 x HDMI
LAN	10/100/1000 Mbps
WLAN	802.11 BGN
Webcam	Yes
Numeric Keypad	Yes
Software	ASUSDVD 6-in-1 Adobe Acrobat Reader 9.0 Trend Micro Internet Security 2010 ASUS SmartLogon Asus Power4Gear Hybrid Asus Live Update Asus Multi-Frame ASUS Wireless Console Virtual Camera ASUS Splendid Asus Screen Saver Fancy Start eManual AI Recovery ASUS FastBoot ControlDeck
Battery	6 cell
Warranty	1 year global
Dimension	37.8 x 25.3 x 2.83 ~ 3.49 cm (WxDxH)
Weight	2.60 kg (with 6 cell battery)
Colour	Brown (Matte Metallic)





# Data Sheet - **ASUS K53E**

## The Perfect Fit for Work and Play

### Classy Metallic Design

The highly durable premium aluminum textures retain their looks and quality even during extensive, prolonged use, allowing you to do more with your K53 Series in complete confidence.

### IceCool Technology Keeps Your Hands Cool

IceCool Technology makes your PC experience cool and comfortable even during the longest computing sessions. Exclusive dual-sided motherboard design places hot components on the underside and away from users. Combined with heat pipes and vents, palm rests and typing surfaces stay cooler.

### Palm Proof Technology Prevents Accidental Input

Intelligent touchpad distinguishes between palm and finger contact to prevent inadvertent cursor movements during typing.



### K53E-SX963V

CPU	Intel® Core™ i5-2430M (2.4GHz)
OS	Genuine Windows® 7 Home Premium 64bit
Panel	15.6" HD TFT (1366x768, Color-Shine)
Graphics	Integrated Intel® GMA HD
HDD	640GB (5400rpm)
Memory	4G (2048x2)
Type	DDRIII 1066
ODD	DVD Super Multi Dual Layer
Speaker	Built-in speakers and microphone Altec Lansing® speakers
PC Card Slot	4 -in-1 card reader ( SD/ MS/ MS Pro/ MMC)
I/O Port	1 x Microphone-in jack 1 x Headphone-out jack 1 x VGA port/Mini D-sub 15-pin for external monitor 3 x USB 2.0 port(s) 1 x RJ45 LAN Jack for LAN insert 1 x HDMI
LAN	10/100/1000 Mbps
WLAN	802.11 BGN
Webcam	Yes
Numeric Keypad	Yes
Software	ASUSDVD 6-in-1 Adobe Acrobat Reader 9.0 Trend Micro Internet Security 2010 ASUS SmartLogon Asus Power4Gear Hybrid Asus Live Update Asus Multi-Frame ASUS Wireless Console Virtual Camera ASUS Splendid Asus Screen Saver Fancy Start eManual AI Recovery ASUS FastBoot ControlDeck
Battery	6 cell
Warranty	1 year global
Dimension	37.8 x 25.3 x 2.83 ~ 3.49 cm (WxDxH)
Weight	2.60 kg (with 6 cell battery)
Colour	Brown (Matte Metallic)





# Data Sheet - ASUS K53SC

## The Perfect Fit for Work and Play

### Classy Metallic Design

Featuring 2nd Generation Intel® Core™ Processors and an elegant colour scheme based on premium aluminum textures, the new K53 Series offers an expressive combination of technology and style. The highly durable premium aluminum textures retain their looks and quality even during extensive, prolonged use, allowing you to do more with your K53 Series in complete confidence.

### IceCool Technology Keeps Your Hands Cool

IceCool Technology makes your PC experience cool and comfortable even during the longest computing sessions. Exclusive dual-sided motherboard design places hot components on the underside and away from users. Combined with heat pipes and vents, palm rests and typing surfaces stay cooler.

### Palm Proof Technology Prevents Accidental Input

Intelligent touchpad distinguishes between palm and finger contact to prevent inadvertent cursor movements during typing.



### K53SC-SX307V

CPU	Intel® Core™ i5-2430M (2.4GHz)
OS	Genuine Windows® 7 Home Premium 64bit
Panel	15.6" HD TFT (1366x768, Color-Shine)
Graphics	NVIDIA® GeForce® GT 520MX - 1G DDR3
HDD	500GB (5400rpm)
Memory	4G (2048x2)
Type	DDRIII 1066
ODD	DVD Super Multi Dual Layer
Speaker	Built-in speakers and microphone Altec Lansing® speakers
PC Card Slot	4 -in-1 card reader ( SD/ MS/ MS Pro/ MMC)
I/O Port	1 x Microphone-in jack 1 x Headphone-out jack 1 x VGA port/Mini D-sub 15-pin for external monitor 3 x USB 2.0 port(s) 1 x RJ45 LAN Jack for LAN insert 1 x HDMI
LAN	10/100/1000 Mbps
WLAN	802.11 BGN
Webcam	Yes
Numeric Keypad	Yes
Software	ASUSDVD 6-in-1 Adobe Acrobat Reader 9.0 Trend Micro Internet Security 2010 ASUS SmartLogon Asus Power4Gear Hybrid Asus Live Update Asus Multi-Frame ASUS Wireless Console Virtual Camera ASUS Splendid Asus Screen Saver Fancy Start eManual AI Recovery ASUS FastBoot ControlDeck
Battery	6 cell
Warranty	1 year global
Dimension	37.8 x 25.3 x 2.83 ~ 3.49 cm (WxDxH)
Weight	2.60 kg (with 6 cell battery)
Colour	Brown (Matte Metallic)



# Data Sheet - N55SF

## Incredible in Sound

### Fusing Classical and Post-Modern Design

Simple yet sleek design by David Lewis creates a unique mood of sophisticated elegance and modernity, featuring piano-gloss covers and polished metal frames. The new N Series is also extremely user-focused, delivering comfortable soft-feel touchpads, fast-type keys with reinforced springs, and a smoothed-out integrated power button. Intelligent design and meticulous craftsmanship combine to embody a spirit of advanced computing and purely sensational simplicity.

### Notebook Audio Elevated to New Levels

Co-developed with Bang & Olufsen ICEpower®, ASUS SonicMaster Technology brings an evolution of notebook design with an exclusive combination of advanced hardware and software to create an immersive audio experience. Improved and refined for new N Series notebooks, it offers living audio with the most precise processing protocols and codecs, superior speaker construction and large resonance chambers for unforgettable enjoyment – it's like going to a concert, the fidelity revitalises vocals and every sound comes to life through professional enhancement. No more tinny notebook audio and noise distortion – welcome to an era of true hi-fi on PC. The bundled SonicMaster subwoofer adds superb deep note performance for even better audio output.



asus.co.uk

## N55SF-S2342V

Processor	Intel® Core™ i7-2670QM (2.2GHz), can be turbo up to 3.1GHz
OS	Genuine Windows® 7 Home Premium 64bit
Display	15.6" HD+ TFT (1600x900, Color-Shine)
Graphic Card	NVIDIA® GeForce® GT 555M - 2GB DDR3 VRAM
Storage	640GB (5400rpm)
Memory	6G (2048x1, 4096x1)
Type	DDRIII 1066
ODD	Blu-Ray Combo
Wireless	802.11 BGN (WIFI)
LAN	10/100/1000 Mbps
Webcam	HD Web Camera
Bluetooth	Yes (Optional V3.0+HS)
Battery Pack & Life	6 Cell: 5200 mAh 56 Whrs
Warranty	2 year global
Keyboard	Numeric
Card Reader	3 -in-1 card reader ( SD/ MS/MS Pro Duo/ MMC)
Interface	1 x Microphone-in jack 1 x Headphone-out jack (SPDIF) 1 x VGA port/Mini D-sub 15-pin for external monitor 2 x USB 3.0 port(s) 2 x USB 2.0 port(s) 1 x RJ45 LAN Jack for LAN insert 1 x HDMI
Audio	Built-in Speakers And Microphone Bang & Olufsen ICEpower® SonicMaster
LED Status Indicator	HDD Power-on/Suspend Capital Lock Wireless on status indicator Bluetooth on status indicator
Software	ASUSDVD 6-in-1 ASUS Win flash for BIOS and Driver live Update ASUS SmartLogon ASUS Net 4 switch ASUS Live Update ASUS Multi-Frame ASUS NB Probe + ASUS Wireless Console ASUS Data Security Management(ADSM) Virtual Camera ASUS Splendid ASUS Express Gate ASUS Screen Saver Fancy Start eManual AI Recovery
Dimension & weight	37.9 x 26.1 x 3.7 ~ 3.75 cm (WxDxH) 2.7 kg (with 6 cell battery)
Colour	Black (Piano Gloss)

 SonicMaster



  
Inspiring Innovation • Persistent Perfection

# 17' Multimedia

# Data Sheet - ASUS K73E

## Stay Cool with Metallic Chic

### Classy Metallic Design

The new K73 Series offers an expressive combination of technology and style. The highly durable premium aluminum textures retain their looks and quality even during extensive, prolonged use, allowing you to do more with your K73 Series in complete confidence.

### IceCool Technology Keeps Your Hands Cool

IceCool Technology makes your PC experience cool and comfortable even during the longest computing sessions. Exclusive dual-sided motherboard design places hot components on the underside and away from users. Combined with heat pipes and vents, palm rests and typing surfaces stay cooler.

### Palm Proof Technology Prevents Accidental Input

Intelligent touchpad distinguishes between palm and finger contact to prevent inadvertent cursor movements during typing.

### IF Award-winning Ergonomic Chiclet Keyboard

Extra-wide dust-repellent keys stay comfortable even during extended typing sessions for improved productivity and interaction.



## K73E-TY128V

Processor	Intel Pentium® B940 (2.0GHz)
OS	Genuine Windows® 7 Home Premium 64bit
Display	17.3"HD+ TFT (1600 x 900, Colour Shine)
Graphic Card	Integrated Intel® GMA HD
Storage	640GB (5400rpm)
Memory	4G (2048x2)
Type	DDRIII 1066
Optical Drive	DVD Super Multi Dual Layer
Wireless	802.11 BGN
LAN	10/100/1000 Mbps
Webcam	Yes
Numeric Keypad	Yes
Battery Pack & Life	6 cell (5200mAh 56 Whrs)
Warranty	1 year global
Keyboard	19mm full size 88 Key with MS Windows function keys, Numeric Keyboard
Lan/Modem	10/100/1000 Mbps LAN built-in
Card Reader	3 -in- 1 card reader, (SD/ MS/ MMC)
Interface	1 x Microphone-in jack 1 x Headphone-out jack 4 x USB 2.0 port(s) 1 x RJ45 LAN Jack for LAN insert 1 x HDMI
LED Status Indicator	Power-on/Suspend Battery Charging/full/low Storage device access Capital Lock Wireless on status indicator Numeric KB Lock
Audio	Built-in Speakers And Microphone SonicFocus Altec Lansing® Speakers
Software	ASUSDVD 6-in-1 Adobe Acrobat Reader 9.0 Trend Micro Internet Security 2010 ASUS SmartLogon Asus Power4Gear Hybrid Asus Live Update Asus Multi-Frame ASUS Wireless Console Virtual Camera ASUS Splendid Asus Screen Saver Fancy Start eManual AI Recovery ASUS FastBoot ControlDeck
Dimension & weight	42.0 x 28.0 x 3.68 cm (W x D x H) 3.20 kg (with 6 cell battery)
Colour	Brown (Matte Metallic)

 **SonicMaster**

# Data Sheet - ASUS K73E

## Stay Cool with Metallic Chic

### Classy Metallic Design

Featuring 2nd Generation Intel® Core™ Processors and an elegant color scheme based on premium aluminum textures, the new K73 Series offers an expressive combination of technology and style. The highly durable premium aluminum textures retain their looks and quality even during extensive, prolonged use, allowing you to do more with your K73 Series in complete confidence.

### Incredible Processing Power

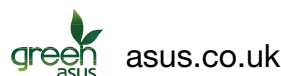
The new K73 Series ships with 2nd Generation Intel® Core™ Processors, as optimized for notebook use with awesome computing power – in particular, these new mobile CPUs enhance multitasking, so you can get more done at the same time, more smoothly.

### IceCool Technology Keeps Your Hands Cool

IceCool Technology makes your PC experience cool and comfortable even during the longest computing sessions. Exclusive dual-sided motherboard design places hot components on the underside and away from users. Combined with heat pipes and vents, palm rests and typing surfaces stay cooler.

### Palm Proof Technology Prevents Accidental Input

Intelligent touchpad distinguishes between palm and finger contact to prevent inadvertent cursor movements during typing.



## K73E-TY040V

Processor	Intel® Core™ i3-2310M (2.1GHz)
OS	Genuine Windows® 7 Home Premium 64bit
Display	17.3"HD+ TFT (1600 x 900, Colour Shine)
Graphic Card	Integrated Intel® GMA HD
Storage	500GB (5400rpm)
Memory	4G (2048x2)
Type	DDRIII 1066
Optical Drive	DVD Super Multi Dual Layer
Wireless	802.11 BGN
LAN	10/100/1000 Mbps
Webcam	Yes
Numeric Keypad	Yes
Battery Pack & Life	6 cell (5200mAh 56 Whrs)
Warranty	1 year global
Keyboard	19mm full size 88 Key with MS Windows function keys, Numeric Keyboard
Lan/Modem	10/100/1000 Mbps LAN built-in
Card Reader	3 -in- 1 card reader, (SD/ MS/ MMC)
Interface	1 x Microphone-in jack 1 x Headphone-out jack 4 x USB 2.0 ports 1 x RJ45 LAN Jack for LAN insert 1 x HDMI
LED Status Indicator	Power-on/Suspend Battery Charging/full/low Storage device access Capital Lock Wireless on status indicator Numeric KB Lock
Audio	Built-in Speakers And Microphone SonicFocus Altec Lansing® Speakers
Software	ASUSDVD 6-in-1 Adobe Acrobat Reader 9.0 Trend Micro Internet Security 2010 ASUS SmartLogon Asus Power4Gear Hybrid Asus Live Update Asus Multi-Frame ASUS Wireless Console Virtual Camera ASUS Splendid Asus Screen Saver Fancy Start eManual AI Recovery ASUS FastBoot ControlDeck
Dimension & weight	42.0 x 28.0 x 3.68 cm (W x D x H) 3.20 kg (with 6 cell battery)
Colour	Brown (Matte Metallic)

 **SonicMaster**



# Data Sheet - ASUS N73SV

## Power to the future

The most potent processors from Intel drive diverse thrilling adventures, high productivity and memorable moments. With all new Intel Core i CPU inside, the N Series has the power and seamless capabilities to achieve and enjoy more with great power efficiency and a smooth user experience.



## Enjoy and work longer

N Series notebooks feature powerful yet efficient graphics solutions, with the mobile implementation of NVIDIA Optimus switching technology on select models. This allows for real time alternating between integrated and discrete graphics to achieve the right amount of energy consumption for the task for superior performance and longer battery

## Listen to the Revolution

ASUS exclusive SonicMaster features technology approved and co-developed by world-famous Bang & Olufsen ICEpower, bringing living audio to notebook PCs with the most precise processing protocols and codecs, superior speaker construction and large resonance chambers for impactful enjoyment – it's like going to a concert, the fidelity revitalises vocals and every sound comes to life through advanced sound enhancement.

No more tinny notebook audio and suffering from noise distortion – welcome to an era of true hi-fi on PC.



## N73SV-TZ193V

Processor	Intel® Core™ i5-2410M (2.3GHz)
OS	Genuine Windows® 7 Home Premium 64bit
Display	17.3" FHD TFT (1920x1080, Colour Shine)
Graphic Card	NVIDIA® GeForce® GT 540M - 1G DDR3
Storage	640GB (5400rpm)
Memory	6G (4096x1, 2048x1)
Type	DDRIII 1066
Optical Drive	Blu-Ray Combo
Wireless	802.11 BGN
LAN	10/100/1000 Mbps
Webcam	Yes
Numeric Keypad	Yes
Battery Pack & Life	6 cell
Warranty	2 year global
Bluetooth	Yes
Keyboard	19mm full size 88 Key with MS Windows function keys, Numeric Keyboard
Card Reader	5 in 1 card reader SD,MMC,MS,MS-Pro,XD
Interface	1 x Microphone-in jack 1 x Headphone-out jack (S/PDIF) 1 x VGA port/Mini D-sub 15-pin for external monitor 1 x USB 3.0 ports (optional) 2 x USB 2.0 ports 1 x RJ45 LAN Jack for LAN insert 1 x HDMI 1 x E-SATA (Combo with USB 2.0)
Audio	Built-in speaker and microphone Bang & Olufsen ICEpower® SonicFocus
Battery	6 cell: 4400mAh
Dimension & weight	42.0 x 28.7 x 3.67~4.05 cm (W x D x H) 3.40 kg (with 6 cell battery)
Colour	Silver (Aluminium)

 SonicMaster



Professional



# Data Sheet - ASUS P53E

## The Trusted Business Solution

### Intelligent Performance

ASUSPRO P Series notebooks with 2nd generation Intel® core processors feature improved adaptive performance that speeds up when you need extra power, and built-in graphics capabilities for a noticeably better PC experience.

### Clear display even in bright environments

Glare-proof screens use advanced panel layering manufacturing methods that allow users to see and read with comfort and clarity even under bright lights. This is particularly useful when outdoors.

### Durable anti-shock hard drive

ASUS ShockShield motion sensors and anti-shock cushions safeguard the hard drive and valuable data against damage.

### ASUS Secure Delete - permanently erases sensitive data

An easy-to-use interface that allows you to permanently remove confidential data from the recycle bin. Simply launch Secure Delete and drag and drop the files to be deleted.



## P53E-SO102X

Processor	Intel® Core™ i3-2330M (2.2GHz)
OS	Genuine Windows® 7 Professional 64bit
Display	15.6" HD TFT (1366x768, Color-Shine)
Graphic Card	Integrated Intel® GMA HD
Storage	320GB (5400rpm)
Memory	2G (2048 x 1)
Type	DDRIII 1066
Optical Drive	DVD Super Multi Dual Layer
Wireless	802.11 BGN
Webcam	Yes
Battery Pack & Life	6 cell
Warranty	1 year global
Keyboard	Numeric Keyboard
Bluetooth	Yes
Lan/Modem	10/100/1000 Mbps
Card Reader	4 -in-1 card reader ( SD/ MS/ MMC)
Interface	1 x Microphone-in jack 1 x Headphone-out jack 1 x VGA port/Mini D-sub 15-pin for external monitor 3 x USB 2.0 port(s) 1 x RJ45 LAN Jack for LAN insert 1 x HDMI
LED Status Indicator	Numeric KB Lock Power-on/Suspend Battery Charging/full/low Storage device access Capital Lock Wireless on status indicator
Audio	Built-in Speakers And Microphone SonicFocus Altec Lansing® Speakers
Software	ASUSDVD 6-in-1 Adobe Acrobat Reader 9.0 Trend Micro Internet Security 2010 ASUS SmartLogon Asus Power4Gear Hybrid Asus Live Update Asus Multi-Frame ASUS Wireless Console Virtual Camera ASUS Splendid Asus Screen Saver Fancy Start eManual AI Recovery ASUS FastBoot ControlDeck
Dimension & weight	37.8 x 25.3 x 3.17~ 3.60 cm (WxDxH) 2.60 kg (with 6 cell battery)
Colour	Black (Matte)

 **SonicMaster**



# Data Sheet - ASUS P53E

## The Trusted Business Solution

### Intelligent Performance

ASUSPRO P Series notebooks with 2nd generation Intel® core processors feature improved adaptive performance that speeds up when you need extra power, and built-in graphics capabilities for a noticeably better PC experience.

### Clear display even in bright environments

Glare-proof screens use advanced panel layering manufacturing methods that allow users to see and read with comfort and clarity even under bright lights. This is particularly useful when outdoors.

### Durable anti-shock hard drive

ASUS ShockShield motion sensors and anti-shock cushions safeguard the hard drive and valuable data against damage.

### ASUS Secure Delete - permanently erases sensitive data

An easy-to-use interface that allows you to permanently remove confidential data from the recycle bin. Simply launch Secure Delete and drag and drop the files to be deleted.



## P53E-SO057X

Processor	Intel® Core™ i3-2330M (2.2GHz)
OS	Genuine Windows® 7 Professional 64bit
Display	15.6" HD TFT (1366x768, Color-Shine)
Graphic Card	Integrated Intel® GMA HD
Storage	320GB (5400rpm)
Memory	4G (2048 x 2)
Type	DDRIII 1066
Optical Drive	DVD Super Multi Dual Layer
Wireless	802.11 BGN
Webcam	Yes
Battery	6 cell
Warranty	1 year global
Keyboard	Numeric Keyboard
Bluetooth	Yes
Lan/Modem	10/100/1000 Mbps
Card Reader	4 -in-1 card reader ( SD/ MS/ MMC)
Interface	1 x Microphone-in jack 1 x Headphone-out jack 1 x VGA port/Mini D-sub 15-pin for external monitor 3 x USB 2.0 port(s) 1 x RJ45 LAN Jack for LAN insert 1 x HDMI
LED Status Indicator	Numeric KB Lock Power-on/Suspend Battery Charging/full/low Storage device access Capital Lock Wireless on status indicator
Audio	Built-in Speakers And Microphone SonicFocus Altec Lansing® Speakers
Software	ASUSDVD 6-in-1 Adobe Acrobat Reader 9.0 Trend Micro Internet Security 2010 ASUS SmartLogon Asus Power4Gear Hybrid Asus Live Update Asus Multi-Frame ASUS Wireless Console Virtual Camera ASUS Splendid Asus Screen Saver Fancy Start eManual AI Recovery ASUS FastBoot ControlDeck
Dimension & weight	37.8 x 25.3 x 3.17~ 3.60 cm (WxDxH) 2.60 kg (with 6 cell battery)
Colour	Black (Matte)

 SonicMaster



# Data Sheet - **ASUS B53E**

## Pro Notebooks for Business Pros

### Top Quality Commercial Notebooks

ASUSPRO B Series notebooks are all strictly quality tested to surpass industry standards, surviving drop tests, hinge test cycles and panel pressure testing.

### Smart card access, fingerprint readers and optional TPM

Strict gatekeeping and privacy controls to guarantee only authorized users have access to important files.

### ASUS Secure Delete - permanently erases sensitive data

An easy-to-use interface that allows you to permanently remove confidential data from the recycle bin. Simply launch Secure Delete and drag and drop the files to be deleted.

### ASUS Power Station II

Uncompromising, expansive connectivity through a detachable docking station that allows for the quick connection of peripherals, communication devices, and power cables.



## B53E-SO123X

Processor	Intel® Core™ i5-2430M (2.4GHz)
OS	Genuine Windows® 7 Professional 64bit
Display	15.6" HD TFT (1366x768, Color-Shine)
Graphic Card	Integrated Intel® GMA HD
Storage	500GB (5400rpm)
Memory	4G (2048x2)
Type	DDRII 1066
Optical Drive	DVD Super Multi Dual Layer
Wireless	802.11 BGN
LAN	10/100/1000 Mbps
Webcam	Yes
Finger Print	Yes
Security	TPM
Battery	8 cell
Warranty	1 year global
Keyboard	Numeric Keyboard
Bluetooth	Yes
Lan/Modem	10/100/1000 Mbps
Card Reader	5 in 1 card reader SD,MMC,MS,MS-Pro,XD
Interface	1 x Microphone-in jack 1 x Headphone-out jack 1 x VGA port/Mini D-sub 15-pin for external monitor 1 x USB 3.0 port(s) 2 x USB 2.0 port(s) 1 x RJ45 LAN Jack for LAN insert 1 x HDMI 1 x E-SATA (USB2.0 Combo) Ports 1 x RJ11 Modem jack for phone line 1 x Express card 1 x Display Port 1 x Fingerprint
LED Status Indicator	Numeric KB Lock Power-on/Suspend Battery Charging/full/low Storage device access Capital Lock Wireless on status indicator
Audio	Built-in speaker and microphone Altec Lansing® speakers
Dimension & weight	38.4 x 26.3 x 3.30 ~ 3.50 cm (W x D x H) 2.69 kg
Colour	Black (Matte)



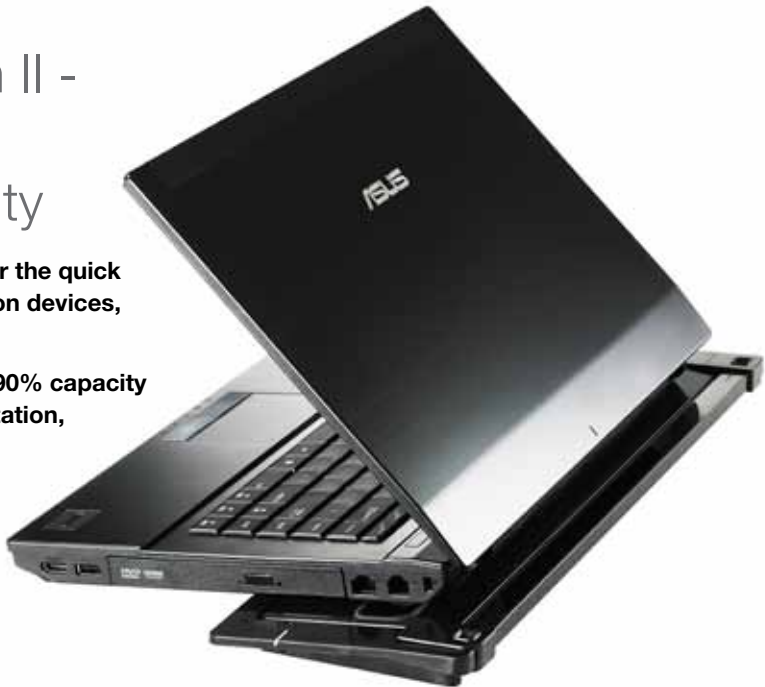
\*Spill proof Repels Up to 120cc of Liquid

# Data Sheet - B53E Docking Station

## ASUS Power Station II - Uncompromised, expansive connectivity

The detachable docking station allows for the quick connection of peripherals, communication devices, and power cables.

ASUS Xpress Charge - quick charges to 90% capacity in just 90 minutes. Detachable docking station, and multitask on up to three displays



### Docking Power Station II 90-N0LDK1003Y:

Device Compatibility	B53E Notebook only
Interface	1x Kensington® Lock Port 4x USB 2.0 port(s) 1x RJ-45 LAN Port 1x VGA Port 1x Display (DVI-D) Output 1x HDMI Port 1x COM Port 1x Parallel Port 1x PS2 Port 2x Audio Jacks 1x Power (DC) Input



All specifications are subject to change without notice. Please check with your supplier for exact offers. Products/features may not be available in all markets.

Gaming

# Data Sheet - G53SW

## Ignite True-to-life Battles

### Processing muscle

The popular G53 series has been updated with the recent release of Intel's® 2nd generation Core™ i7 for an even faster notebook. With performance rivaling that of a desktop computer, the G53SW is ready for anything that you throw at it, from office applications to video encoding and gaming.

### Always cool

With its eye-catching design, the G53SW deploys unique cooling and noise dampening, with two huge rear venting exhausts that push both heat and noise away from users. This results in a cool and quiet environment.

### Awesome audio

EAX and THX surround audio boosts game enjoyment and immersion with realistic effects and enveloping sound, while redefining sonic performance in music and movies.

### Comfort first

The ergonomic illuminated keyboard sits at a 5 degree angle to increase usability even during long gaming sessions, plus surfaces come wrapped in a rubberized material for even greater ease of use.

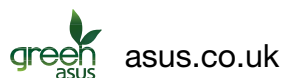
### Gorgeous graphics

The G53SW utilizes the brand new NVIDIA GTX 460M with a massive 1.5GB GDDR5. Based on Fermi technology, this new graphics processor offers native DirectX11 for a huge graphics gain in high definition gaming, plus dedicated video acceleration.

Bundled with the G53SW is 3DTV Play from NVIDIA, which projects the high definition graphics of this notebook onto any compatible 3DTV via HDMI 1.4. This includes 3D video, games and photos, taking the experience into the living room.



\*subject to system configuration and prevailing usage.



## G53SW-IX097Z

Processor	Intel® Core™ i7-2630QM (2.0GHz), can be turbo up to 2.9GHz
OS	Genuine Window® 7 Ultimate 64bit
Display	15.6" HD TFT (1366x768, Color-Shine), 3D Panel
Graphic Card	NVIDIA® GeForce® GTX 460M - 1.5G DDR5 VRAM
Storage	1TB (500GBx2) (5400rpm)
Memory	8G (4096 x 2)
Type	DDRIII 1333
Optical Drive	Blu-Ray Combo
Wireless Network	802.11BGN
Bluetooth	Yes
LAN	10/100/1000 Mbps LAN built-in
Webcam	2.0 Mega Pixel web camera
Battery	8 Cell
Warranty	2 year global
Numeric Keyboard	Yes
Bluetooth	Yes
Lan/Modem	10/100/1000 Mbps LAN built-in
Keyboard	19mm full size 88 Key with MS Windows function keys
Card Reader	5 -in-1 card reader ( SDXC/ MS/ MS Pro/ MS Duo/ MMC)
Interface	1 x Microphone-in jack 1 x Headphone-out jack 1 x USB 3.0 port(s) 3 x USB 2.0 port(s) 1 x RJ45 LAN Jack for LAN insert 1 x HDMI
Audio	Built-in Speakers And EAX Advanced HD 5.0 THX TruStudio
Software	ASUS DVD 6-in-1 WinDVD6 BD Adobe Acrobat Reader 9.0 Trend Micro Internet Security 2009 ASUS Win flash for BIOS and Driver live Update Asus Win flash for BIOS and Driver live Update ASUS SmartLogon ASUS Net 4 switch Asus Live Update Power 4 Phone Asus NB Probe + ASUS Wireless Console Virtual Camera ASUS Splendid ASUS Hotkey ASUS Express Gate Fancy Start AI Recovery
Supplied Accessories	3D Glasses + Headset + Gaming Bag & Mouse
Dimension & weight	39.1 x 29.7 x 2.00 ~ 5.00 cm (W x D x H) 3.6 kg (with 8 cell battery)





# Data Sheet - G53SX

## Ignite True-to-life Battles

### Processing muscle

The popular G53 series has been updated with the recent release of Intel's® 2nd generation Core™ i7 for an even faster notebook. With performance rivaling that of a desktop computer, the G53SW is ready for anything that you throw at it, from office applications to video encoding and gaming.

### Always cool

With its eye-catching design, the G53SW deploys unique cooling and noise dampening, with two huge rear venting exhausts that push both heat and noise away from users. This results in a cool and quiet environment.

### Awesome audio

EAX and THX surround audio boosts game enjoyment and immersion with realistic effects and enveloping sound, while redefining sonic performance in music and movies.

### Comfort first

The ergonomic illuminated keyboard sits at a 5 degree angle to increase usability even during long gaming sessions, plus surfaces come wrapped in a rubberized material for even greater ease of use.

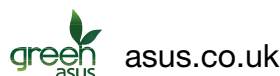
### Gorgeous graphics

The G53SW utilizes the brand new NVIDIA GTX 460M with a massive 1.5GB GDDR5. Based on Fermi technology, this new graphics processor offers native DirectX11 for a huge graphics gain in high definition gaming, plus dedicated video acceleration.

Bundled with the G53SW is 3DTV Play from NVIDIA, which projects the high definition graphics of this notebook onto any compatible 3DTV via HDMI 1.4. This includes 3D video, games and photos, taking the experience into the living room.



\*subject to system configuration and prevailing usage.



## G53SX-IX122V

Processor	Intel® Core™ i7-2670QM (2.2GHz), can be turbo up to 3.1GHz
OS	Genuine Windows® 7 Home Premium 64bit
Display	15.6" HD TFT (1366x768, Color-Shine), 3D Panel
Graphic Card	NVIDIA® GeForce® GTX 560M - 2G DDR5 VRAM
Storage	1TB (500GBx2) (5400rpm)
Memory	8G (4096 x 2)
Type	DDRIII 1333
Optical Drive	Blu-Ray Combo
Wireless Network	802.11BGN
Bluetooth	Yes
LAN	10/100/1000 Mbps LAN built-in
Webcam	2.0 Mega Pixel web camera
Battery Pack & Life	8 Cell
Warranty	2 year global
Numeric Keyboard	Yes
Bluetooth	Yes
Lan/Modem	10/100/1000 Mbps LAN built-in
Keyboard	19mm full size 88 Key with MS Windows function keys
Card Reader	5 -in-1 card reader ( SDXC/ MS/ MS Pro/ MS Duo/ MMC)
Interface	1 x Microphone-in jack 1 x Headphone-out jack 1 x USB 3.0 port(s) 3 x USB 2.0 port(s) 1 x RJ45 LAN Jack for LAN insert 1 x HDMI
Audio	Built-in Speakers And EAX Advanced HD 5.0 THX TruStudio
Software	ASUSDVD 6-in-1 WinDVD6 BD Adobe Acrobat Reader 9.0 Trend Micro Internet Security 2009 ASUS Win flash for BIOS and Driver live Update Asus Win flash for BIOS and Driver live Update ASUS SmartLogon ASUS Net 4 switch Asus Live Update Power 4 Phone Asus NB Probe + ASUS Wireless Console Virtual Camera ASUS Splendid ASUS Hotkey ASUS Express Gate Fancy Start AI Recovery
Supplied Accessories	3D Glasses + Headset + Gaming Bag & Mouse
Dimension & weight	39.1 x 29.7 x 2.00 ~ 5.00 cm (W x D x H) 3.6 kg (with 8 cell battery)





# Data Sheet - G74SX

## Hail to the King!

The world of portable gaming has a new reigning king. The G74SX is a performance notebook that imposes its will with the combined power of a second generation Intel® Core™ i7 CPU and NVIDIA® GTX 560M GPU with 3GB of GDDR5 VRAM. A score of P2008 in 3DMark11 and P9180 in 3DMark Vantage takes over the reins as the fastest notebook in the land. Support for DirectX®11 ensures that you'll not only have the fastest rig in town, but also the ability to play games as they were meant to be seen for a long time.

## Stealth and Strength

Like its predecessor, the G74SX design was inspired by sharp polygonal shapes, but this time inspiration came from the US Navy's Sea Shadow stealth ship and modern day aircraft carriers. Like the stealth ship, opponents will never know what hit 'em, and like an aircraft carrier, the G74 has the firepower to shock and awe the competition.

## True-to-life 3D Video & Audio

The G74SX is great for gaming, but its hardware is serious business. It offers the best 3D ecosystem for PCs, offering 3D content creation and editing. It's powered with NVIDIA® 3D Vision™, so games, photos and movies are all able to be enjoyed like never before. There's also the ability to output the G74SX to a 3D TV, so you can enjoy 3D entertainment from the living room. Pair that up with THX + EAX 5.0 3D gaming audio technology, and together they make the G74 not only a great gaming notebook, but also a hub for multimedia entertainment.

## Get Comfy

Gaming is something to be enjoyed, so why not be more comfortable for extended gaming sessions? Fatigue will be a thing of the past, thanks to the G74's 5° incline keyboard designed to provide a better ergonomic angle, as well as super comfortable rubber-like palm rests that's easy on the palm and wrist. There's also more space between the keyboard and number pad, so it more resembles a desktop keyboard.



## G74SX-91131Z

Processor	Intel® Core™ i7-2630QM (2.0GHz), can be turbo up to 2.9GHz
OS	Genuine Windows® 7 Ultimate 64bit
Display	17.3" Full HD TFT (1920x1080, Color-Shine), 3D Panel
Graphic Card	NVIDIA® GeForce® GTX 560M - 3G DDR5 VRAM
Storage	1.5TB (750GBx2) (7200rpm)
Memory	8G (4096 x 2)
Type	DDRIII 1333
Optical Drive	Blu-Ray RW
Wireless Network	802.11 BGN
Bluetooth	Yes
Webcam	Yes
Battery Pack & Life	8 cell
Warranty	2 year global
Numeric Keyboard	Yes
Lan/Modem	10/100/1000 Base T
Keyboard	19mm full size 88 Key with MS Windows function keys
Card Reader	8 -in-1 card reader ( SD/Mini-SD/ MS/ MS Pro/ MS Duo/MS Pro Duo/ xD/ MMC)
Interface	1 x Microphone-in jack 1 x Headphone-out jack (SPDIF) 1 x VGA port/Mini D-sub 15-pin for external monitor 1 x USB 3.0 port(s) 3 x USB 2.0 port(s) 1 x RJ45 LAN Jack for LAN insert 1 x HDMI
Audio	Built-in 2 Speakers And Digital Array Microphone Built-in Azalia compliant audio chip, with 3D effect
Supplied Accessories	3D Glasses + Headset + Gaming Bag & Mouse
Software	WinDVD8 BD Adobe Acrobat Reader 9.0 NERO 8 Essentials Power2Go Trend Micro Internet Security 2009/2010 ASUS SmartLogon Asus Power4Gear Hybrid Asus Live Update Asus NB Probe + ASUS Life Frame 3 ASUS Wireless Console Virtual Camera ASUS Splendid ASUS Hotkey ASUS Express Gate Asus Screen Saver Fancy Start eManual AI Recovery
Dimension & weight	42.0 x 32.5 x 2.09 ~6.20 cm (WxDxH) 4.28 kg (with 8 cell battery)



# THE ULTIMATE 17" GAMING LAPTOP

## ASUS ROG G74

STRIKE IN SILENCE



### Hail to the King!

The world of portable gaming has a new reigning king. The G74SX is a performance notebook that imposes its will with the combined power of a second generation Intel® Core™ i7 CPU and NVIDIA® GTX 560M GPU with 3GB of GDDR5 VRAM. A score of P2008 in 3DMark11 and P9180 in 3DMark Vantage takes over the reins as the fastest notebook in the land. Support for DirectX®11 ensures that you'll not only have the fastest rig in town, but also the ability to play games as they were meant to be seen for a long time.

### True-to-life 3D Video & Audio

The G74SX is great for gaming, but its hardware is serious business. It offers the best 3D ecosystem for PCs, offering 3D content creation and editing. It's powered with NVIDIA® 3D Vision™, so games, photos and movies are all able to be enjoyed like never before. There's also the ability to output the G74SX to a 3D TV, so you can enjoy 3D entertainment from the living room. Pair that up with THX + EAX 5.0 3D gaming audio technology, and together they make the G74 not only a great gaming notebook, but also a hub for multimedia entertainment.

### Stealth and Strength

Like its predecessor, the G74SX design was inspired by sharp polygonal shapes, but this time inspiration came from the US Navy's Sea Shadow stealth ship and modern day aircraft carriers. Like the stealth ship, opponents will never know what hit 'em, and like an aircraft carrier, the G74 has the firepower to shock and awe the competition.

**Intel® Core™ i7 CPU and up to 8GB memory**

**NVIDIA® GTX 560M GPU with 3GB of GDDR5**

**Huge vents for max cool and min noise**



Lamborghini

# Data Sheet - **Lamborghini VX7**

## Experience a new style of speed with the **ASUS-Automobili Lamborghini VX7**

Ultra-luxe design inspired by the world-famous Italian supercars meets ASUS technological excellence. It's our most powerful notebook to date, ready to take you for a ride.

### Looks Stunning

Taking design cues from the Automobili Lamborghini and Murcielago LP640, the VX7 retains their aerodynamic and aggressive stance for a style that stands out from the crowd. Expect people to notice. Premium materials, sleek textures and bold colors complete this notebook, revving up your high-octane computing.

### Packed with Tech

When you get your hands on the VX7 with Genuine Windows® 7 Ultimate, you're assured performance that races past the competition. This is the crème de la crème of portable PCs.

NVIDIA® GeForce™ GTX 460M graphics with giant 3GB video memory set the stage for high res gaming and none of the compromise lesser notebooks force on you. This is the real deal.

All new Intel® 2nd Generation Core™ i7 Processors propel computing with extreme quad-core performance for better HD multimedia and multitasking so you get more done – faster.

Up to 16GB DDR3 main memory ensure a grand touring experience of smooth performance and better output in every application.

New Super-Speed USB 3.0 runs up to ten times faster than USB 2.0, an ideal fit for your HD content and files.



\*subject to system configuration and prevailing usage.

## **VX7-SZ058Z**

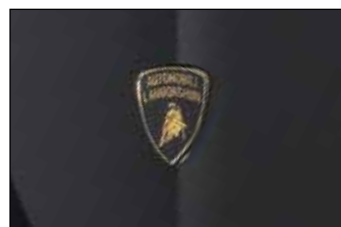
Processor	<b>Intel® Core™ i7-2630QM (2.0GHz), can be turbo up to 2.9GHz</b>
OS	Genuine Windows® 7 Ultimate (64bit)
Display	15.6" Full HD TFT (1920x1080)
Graphic Card	<b>NVIDIA® GeForce® GTX 460M - 3GB GDDR5 VRAM</b>
Storage	<b>1.5TB (750GBx2) (7200rpm)</b>
Memory	8G (4096x2)
Type	DDRIII 1333
Optical Drive	Blu-Ray Combo
Wireless	802.11 BGN
Webcam	2.0 Mega Pixel web camera
Bluetooth	Built-in Bluetooth™ V2.1+EDR
Bag/Mouse	Lamborghini bag & mouse included
Battery	8 cell
Warranty	2 year global
Keyboard	19mm full size 88 Key with MS Windows function keys + numeric keypad
Lan/Modem	10/100/1000 Base T
Card Reader	8 -in-1 card reader ( SD/Mini-SD/ MS/ MS Pro/ MS Duo/MS Pro Duo/ xD/ MMC)
Security	BIOS Booting / HDD User Password Protection and security lock Kensington lock hole Fingerprint
Interface	1 x Microphone-in jack 1 x Headphone-out jack (SPDIF) 1 x VGA port/Mini D-sub 15-pin for external monitor 1 x USB 3.0 port(s) 3 x USB 2.0 port(s) 1 x RJ45 LAN Jack for LAN insert 1 x HDMI
Audio	Built-in 2 Speakers And Digital Array Microphone Built-in Azalia compliant audio chip, with 3D effect
Software	ASUS AiRecovery, ASUS Smart Logon, ASUS Power4Gear Hybrid, ASUS Winflash, ASUS Live Update, ASUS Fast Boot, ASUS Color Enhancement (Splendid), ASUS Virtual Camera, ASUS LifeFrame3, ASUS ControlDeck, ASUS Wireless Console 3, ASUS FancyStart, ASUS Screen Saver, eManual, Trend Micro Internet Security 2010 30-day trial, Syncables Desktop SE, Power recovery, Asus Access Link, Asus WebStorage, Express Gate Cloud, Windows Live3 package & Toolbar, Google package & Toolbar, GamePark Console(JPN image not installed),@Vibe, Video Magic player
Accessories Supplied	Bag & Mouse
Dimension & weight	40.2 x 30.9 x 5.00 ~ 5.79 cm (WxDxH) 3.82 kg (with 8 cell battery)

# VX7

*a new style of speed*



Ignite the might of the most powerful notebook ever from ASUS, The ASUS AUTOMOBILI Lamborghini VX7. Experience the sheer force of a 2nd generation Intel® quad-core Core™ i7 CPU, driven by Microsoft Genuine Windows® 7 and massive NVIDIA® GeForce™ GTX 460M graphics with 3GB dedicated video memory, as the VX7 launches your computing into an entirely higher plane of excitement and sophistication with a design reflecting the flowing and aggressive look of Lamborghini supercars.



Ultra Portable



# Data Sheet - U46SV

## Power in a thin and light design

### Under an inch thick!

The ultra-thin and light design fits more technology into a compact form factor that's easy to carry and use. The slim bezel means a bigger screen can be attached to a more slender chassis, while the spun aluminum finish creates a very unique look. ASUS has also engineered a special hinge-forward design for the new U46SV, allowing for a wider opening angle and easier viewing even in the confines of an aircraft seat.

### Powerful 2nd generation Intel® Core™ processors and NVIDIA® GeForce® GPU

Standard voltage, uncompromising Core™ i5 CPUs easily handle more intense multitasking, higher definition and smoother multimedia, plus faster productivity for a portable PC you can rely on in any application. The discrete NVIDIA® GeForce® GT 540M GPU boosts visual output with native DirectX® 11 compatibility for the latest in graphics, so that everything from HD movies to high-end PC games runs smoothly and in incredible detail.

### Extended battery life

Highly efficient technology and optimized energy requirements give you the benefit of a finely-tuned battery that can last up to 10 hours\* on one charge. This means true all-day computing wherever you go, with no need to stop and seek out an inconvenient wall socket.

\*May vary by actual usage conditions



## U46SV-WX044X

Processor	Intel® Core™ i5-2410M (2.3GHz)
OS	Genuine Windows® 7 Professional 64bit
Display	14.0" 16:9 HD (1366x768) Color-Shine
Graphic Card	NVIDIA® GeForce® GT 540M - 1G DDR3 VRAM
Storage	500GB (5400rpm)
Memory	4G (2048x2) DDRIII 1066 RAM
Optical Drive	DVD Super Multi Dual Layer
Wireless	802.11 BGN
LAN	10/100/1000 Base T
Webcam	Yes
Bluetooth	Yes
Battery Pack & Life	8 cell: 5600 mAh
Warranty	2 year global
Lan/Modem	Atheros AR8132M 10/100Mb
Card Reader	4 -in-1 card reader ( SD/ MS/ MS Pro/ MMC)
Interface	1 x Microphone-in jack 1 x Headphone-out jack 1 x VGA port/Mini D-sub 15-pin for external monitor 1 x USB 3.0 port(s) 2 x USB 2.0 port(s) 1 x RJ45 LAN Jack for LAN insert 1 x HDMI
Audio	Built-in speaker and microphone SonicFocus
LED Status Indicator	HDD Power-on/Suspend Capital Lock Wireless on status indicator Bluetooth on status indicator
Software	ASUSDVD 6-in-1 ASUS Win flash for BIOS and Driver live Update ASUS SmartLogon ASUS Net 4 switch ASUS Live Update ASUS Multi-Frame ASUS NB Probe + ASUS Wireless Console ASUS Data Security Management(ADSM) Virtual Camera ASUS Splendid ASUS Express Gate ASUS Screen Saver Fancy Start eManual AI Recovery
Dimension & weight	33.3 x 24.5 x 2.46 ~ 2.70 cm (W x D x H) 2.08 kg (with 4 cell battery)
Colour	Champagne Gold (Silver)

 **SonicMaster**

 **Up to 10 hours  
battery life**

\*subject to system configuration  
and prevailing usage.





# Data Sheet - U36SG

## Power in a thin and light design

### Super thin notebook with Intel standard voltage CPU

In today's world, more of our daily computing is done on the move and notebooks have become an essential part of our lives. In the past, having a notebook that was thin and lightweight meant sacrificing performance. Not anymore. Introducing the ASUS U36, the world's first 19mm thin notebook with an Intel® standard voltage CPU. Along with ASUS Super Hybrid Engine technology giving a boost in performance when needed, the U36 offers the absolute best combination of performance for the size. With the U36 weighing in at a mere 1.6kg with an 8-cell battery, it is also the lightest notebook with a standard voltage CPU, challenging the way you think about lightweight notebooks.

### Exclusive thermal technology

Like humans, the harder a computer works, the hotter its internal temperature gets. The problem with pushing a computer to the limit is the amount of heat it generates and how to get rid of it. With the U36, ASUS engineers tackled this problem by developing exclusive thermal technology to keep not only the system cooler, but the palm rest area as well. Using dual lightweight heat pipes and an efficiently-designed layout, heat is transferred away from the palm rest for a more comfortable user experience.



## U36SG-RX107X

Processor	Intel® Core™ i5-2430M (2.4GHz)
OS	Genuine Windows® 7 Professional 64bit
Display	13.3" HD TFT (1366x768, Color-Shine, LED)
Graphic Card	NVIDIA® GeForce® GT 610M - 1GB DDR3 VRAM
Storage	500GB (5400rpm)
Memory	4G (2048x2) DDRIII 1066 RAM
Optical Drive	N/A
Wireless	802.11 BGN
LAN	10/100/1000 Base T
Webcam	Yes
Bluetooth	Yes (Optional V2.1+EDR or V3.0+HS)
Battery Pack & Life	8 cell: 5600 mAh 83Whrs
Warranty	2 year global
Keyboard	Numeric
Lan/Modem	Atheros AR8132M 10/100Mb
Card Reader	5 -in-1 card reader ( SD/ MS/ MS Pro/ xD/ MMC)
Interface	1 x Microphone-in jack 1 x Headphone-out jack (SPDIF) 1 x VGA port/Mini D-sub 15-pin for external monitor 1 x USB 3.0 port(s) (Optional) 2 x USB 2.0 port(s) 1 x RJ45 LAN Jack for LAN insert 1 x HDMI
Audio	Built-in speakers and microphone Altec Lansing® speakers
LED Status Indicator	HDD Power-on/Suspend Capital Lock Wireless on status indicator Bluetooth on status indicator
Software	ASUSDVD 6-in-1 ASUS Win flash for BIOS and Driver live Update ASUS SmartLogon ASUS Net 4 switch ASUS Live Update ASUS Multi-Frame ASUS NB Probe + ASUS Wireless Console ASUS Data Security Management(ADSM) Virtual Camera ASUS Splendid ASUS Express Gate ASUS Screen Saver Fancy Start eManual AI Recovery
Dimension & weight	32.8 x 23.8 x 1.9 cm (WxDxH) 1.66 kg (with 8 cell battery)



The image features the ASUS ZenBook logo in a white, sans-serif font. The logo is positioned in the upper half of the frame, centered horizontally. The background is a close-up of a brushed metal surface, showing fine, parallel lines that create a textured, metallic appearance. The lighting is soft, highlighting the texture of the metal. The logo itself is clean and modern, with a trademark symbol (TM) at the end of the word "ZENBOOK".

ASUS ZENBOOK™

# Data Sheet - **UX21E**

## ASUS ZENBOOK™

### Power in a ultra thin and light design

#### Incredible Beauty

The ZENBOOK™ uses a precision-crafted design measuring only 3mm at the front and 9mm at the rear. The form features razor thin edges and a curved centre section, which is both practical and attractive – while accommodating the powerful computing components within, this design also looks totally unique. It embodies beauty and strength in complete balance and harmony.

#### Incredible Responsiveness

Exclusive ASUS Super Hybrid Engine II with Instant On enables 2-second resume of the notebook from sleep, with up to two weeks of standby time with open files and other pending data kept safe in memory. Plus, automatic data backup when the battery reaches 5% charge further helps secure your work.

#### Incredible Performance

ASUS is proud to deliver the world's first ultrabook with SATA 3 128GB solid state storage, making for an amazingly smooth and fast computing experience. Additionally, the ASUS ZENBOOK™ UX21E ships with SuperSpeed USB 3.0 as standard, multiplying the transfer rates of current USB 2.0 by as much as a factor of 10 to 1.

#### Incredible Audio

Another ASUS exclusive, SonicMaster technology was co-developed with Bang & Olufsen ICEpower® to deliver breathtaking, lifelike audio that far exceeds the limitations of conventional notebook PC sound performance.



### UX21E-KX004V

Processor	Intel® Core™ i5-2467M (1.6GHz)
OS	Genuine Windows® 7 Home Premium 64bit
Display	11.6" HD (1366x768) LED
Graphic Card	Integrated Intel® GMA HD
Storage	128GB SSD SATA 3 Hard Drive
Memory	4G (4096x1) DDRIII 1066 MHz SDRAM
Wireless	802.11 BGN
Webcam	Yes
Bluetooth	Bluetooth 4.0
Battery Pack & Life	35 Whrs Polymer Battery (5 Hours)
Warranty	1 year global
Interface	1 x Headphone-out jack (Audio-in Combo) 1 x USB 3.0 port(s) 1 x USB 2.0 port(s) 1 x micro HDMI 1 x Mini VGA
Audio	Built-in speaker and microphone Bang & Olufsen ICEpower® SonicFocus
LED Status Indicator	HDD Power-on/Suspend Capital Lock Wireless on status indicator Bluetooth on status indicator
Dimension & weight	Only 3 mm at the front and 9 mm at the rear 29.9 x 19.6 x 0.3 ~1.7 cm (WxDxH) Only 1.1 kg
Sleeve	Yes
Colour	Silver (Aluminium)



 **SonicMaster**



#### Optional EU Travel adapter

N45W-01 ADAPTER/EU/BK  
90-XB34N0PW00000Y  
For UX21E/UX31E



# Accessories

# Data Sheet - Notebook Accessories

## ASUS TERRA SLIM CARRY BAG

Terra slim bags feature strong construction that helps keep valuables safe, while they can be used as both sleeves and traditional carriers. The slim design is conducive to fast-paced professional and social living, utilising intelligent layouts to get more into the bag without letting go of great style and convenience. Fits up to 16" laptops. Available in grey or blue.

### Terra Slim Carry Bag

Device Compatibility	For 16" Laptop exterior dimension
Dimensions	400(L) x 50(W) x 300(H) mm
Suitable Laptops	<b>B series, K series, N55 series &amp; P series</b>
<b>Grey</b>	<b>90-XB1F00BA00050-</b>
<b>Blue</b>	<b>90-XB1F00BA00060-</b>



## WT400 Mouse - Mix and Match for Ultimate Comfort

Expand your range with precision 2.4GHz wireless control that lets you do more with unlimited freedom, and has a fittingly interesting art design. even – it's an experience all your own. Comfort can be easy, and cost-conscious – the WT400 features smart power saving when at idle, so it's not only pretty, it works better.

### WT400 Mouse

Connectivity Technology	Wireless
Wireless Technology	RF 2.4GHz
Tracking	Optical
Resolution	1000dpi
OS Support	Windows® 7 Windows® Vista Windows® 2000 Windows® XP Mac OS X 10 or higher
RF Distance	10m
Dimensions & Weight	Mouse: 92 (L) x 52 (W) x 35 (H) mm, 72.8g Receiver: 18 (L) x 14 (W) x 5.4 (H) mm, 80g
Contents	1x WT400 mouse 2x AAA battery 1x Manual
<b>Brown</b>	<b>90-XB1G00MU00010-</b>
<b>Grey</b>	<b>90-XB1G00MU00020-</b>

