

## USB 3.1 (10 Gbps) enclosure for 2.5" SATA drives

S251BMU313

DE: Bedienungsanleitung - de.startech.com

FR: Guide de l'utilisateur - fr.startech.com

ES: Guía del usuario - es.startech.com

IT: Guida per l'uso - it.startech.com

NL: Gebruiksaanwijzing - nl.startech.com

PT: Guia do usuário - pt.startech.com

### Packaging contents

- 1x USB 3.1 to SATA enclosure
- 1x USB cable
- 4x assembly screws
- 1x screwdriver
- 1x quick start guide

### System requirements

- USB enabled computer system with an available USB port

**Note:** To obtain the maximum USB throughput, StarTech.com recommends that you use a PC with a USB 3.1 Gen 2 port.

Operating systems are subject to change. For the latest requirements, please visit [www.startech.com/S251BMU313](http://www.startech.com/S251BMU313).

### Product overview

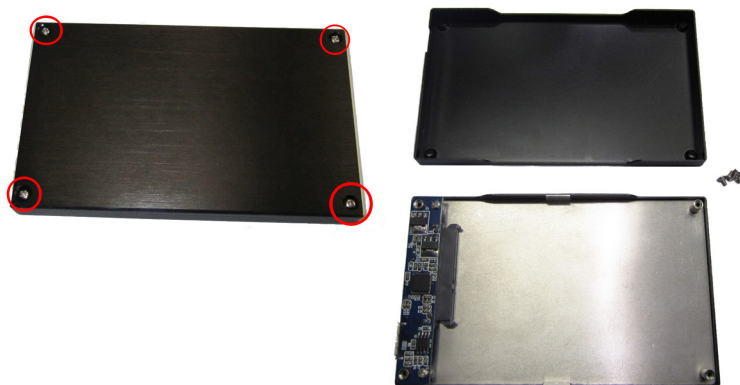


\*actual product may vary from photos

### Install the hardware

**Warning!** Hard drives and storage enclosures should be handled carefully, especially when they're transported. If you're not careful with your hard disk, you may lose data as a result. Make sure that you're properly grounded by wearing an anti-static strap when you install any computer component. If an anti-static strap isn't available, touch a large grounded metal surface (for example, the computer case) for several seconds to discharge any built-up static electricity.

1. Use the provided screwdriver to remove the four small screws from the bottom of the enclosure. When the screws are removed, the two halves of the enclosure should pull apart.



2. Place the 2.5" SATA drive into the half of the enclosure that contains the SATA connector, and slide the drive onto the SATA connector.

**Note:** If you're using a 7 mm SSD drive, use the provided 7 mm to 9.5 mm spacer.

3. To reassemble the enclosure, place the two halves together and replace the four small screws into the bottom of the enclosure.
4. Connect the USB cable to the enclosure and to the host computer system.

### About driver installation

No driver or software installation is required if you use an operating system with USB support. However, this enclosure only operates at the speed level of the USB port it's plugged into (for example, USB 1.x, 2.0, 3.0, 3.1 Gen 2).

### Use the storage device

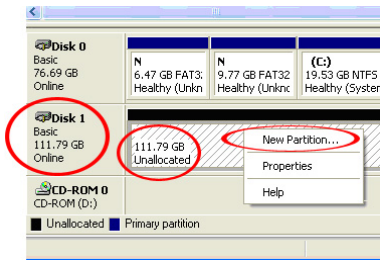
If you install a hard drive that already has data on it, after you plug in the drive, it appears under **My Computer** or **Computer** with a drive letter assigned to it.

If you install a brand-new hard drive that doesn't have any data on it, you must prepare the hard drive for use.

**Note:** The following task will delete any data on the disk drive and should only be completed if the hard drive is brand-new and doesn't have any data on it.

If you use a computer that's running Windows 2000, Windows XP, Windows Vista, or Windows 7, do the following:

- Depending on the OS version that you're running, do one of the following:
  - On your desktop, right-click **My Computer**.
  - On your desktop, right-click **Computer**.
- Click **Manage**.
- On the **Computer Management** screen, click **Disk Management**.
- Locate the disk that is labeled **Unallocated**. To confirm that the hard drive is the correct one, check the hard drive capacity.
- Right-click the section of the window that says **Unallocated** and click **New Partition**.



- To set up the drive, complete the instructions in the **New Partition** wizard.

When the drive is successfully installed, the disk appears under **My Computer** or **Computer** with a drive letter assigned to it.

## FCC Compliance Statement

This equipment has been tested and found to comply with the limits for a Class A digital device, pursuant to Part 15 of the FCC rules. These limits are designed to provide reasonable protection against harmful interference when the equipment is operated in a commercial environment. This equipment generates, uses and can radiate radio frequency energy and, if not installed and used in accordance with the instruction manual, may cause harmful interference to radio communications. Operation of this equipment in a residential area is likely to cause harmful interference in which case the user will be required to correct the interference at his own expense.

This device complies with part 15 of the FCC Rules. Operation is subject to the following two conditions: (1) This device may not cause harmful interference, and (2) this device must accept any interference received, including interference that may cause undesired operation.

Changes or modifications not expressly approved by StarTech.com could void the user's authority to operate the equipment.

## Industry Canada Statement

This Class A digital apparatus complies with Canadian ICES-003.

Cet appareil numérique de la classe [A] est conforme à la norme NMB-003 du Canada.

CAN ICES-3 (A)/NMB-3(A)

## Use of Trademarks, Registered Trademarks, and other Protected Names and Symbols

This manual may make reference to trademarks, registered trademarks, and other protected names and/or symbols of third-party companies not related in any way to StarTech.com. Where they occur these references are for illustrative purposes only and do not represent an endorsement of a product or service by StarTech.com, or an endorsement of the product(s) to which this manual applies by the third-party company in question. Regardless of any direct acknowledgement elsewhere in the body of this document, StarTech.com hereby acknowledges that all trademarks, registered trademarks, service marks, and other protected names and/or symbols contained in this manual and related documents are the property of their respective holders.

## Technical Support

StarTech.com's lifetime technical support is an integral part of our commitment to provide industry-leading solutions. If you ever need help with your product, visit [www.startech.com/support](http://www.startech.com/support) and access our comprehensive selection of online tools, documentation, and downloads.

For the latest drivers/software, please visit [www.startech.com/downloads](http://www.startech.com/downloads)

## Warranty Information

This product is backed by a two-year warranty.

StarTech.com warrants its products against defects in materials and workmanship for the periods noted, following the initial date of purchase. During this period, the products may be returned for repair, or replacement with equivalent products at our discretion. The warranty covers parts and labor costs only. StarTech.com does not warrant its products from defects or damages arising from misuse, abuse, alteration, or normal wear and tear.

## Limitation of Liability

In no event shall the liability of StarTech.com Ltd. and StarTech.com USA LLP (or their officers, directors, employees or agents) for any damages (whether direct or indirect, special, punitive, incidental, consequential, or otherwise), loss of profits, loss of business, or any pecuniary loss, arising out of or related to the use of the product exceed the actual price paid for the product. Some states do not allow the exclusion or limitation of incidental or consequential damages. If such laws apply, the limitations or exclusions contained in this statement may not apply to you.