

## Datasheet

# HP EliteDesk 705 G4 Small Form Factor PC



## Space-saving powerful performance

Powered for the enterprise, the HP EliteDesk 705 SFF is one of our most secure PCs that delivers impressive value with the performance required by today's high-productivity workforce in a new space-saving and stylish design.



## HP recommends Windows 10 Pro.

- Windows 10 Pro<sup>1</sup>
- HP Sure Start Gen4<sup>2</sup>

### Pure performance and enhanced visual experience

- Enjoy the powerful performance of the latest 65W AMD Ryzen™ 3 PRO and Ryzen™ 5 PRO Processors<sup>3</sup> or amplify performance with the optional 95W AMD Ryzen™ 7 PRO Processor<sup>[3, 4]</sup> with up to 8 cores, and 16 threads<sup>4</sup>.

### Expansion that extends your investment

- Configure the new space-saving design of the expandable HP EliteDesk 705 SFF with two bays and two slots, plus, two additional M.2 slots, and plenty of configurable ports.

### Strong security, powerful manageability.

- Get powerful protection and simplified management. HP Sure Start Gen4<sup>2</sup> protects against BIOS attacks while the HP Manageability Integration Kit<sup>5</sup> allows you to easily manage devices through Microsoft System Center Configuration Manager.

### Reliability for the long haul

- This work-ready PC is designed for a long life-cycle with up to 18-months of platform stability. It passed 120,000 hours of testing in the HP Total Test Process<sup>6</sup>, is designed to undergo MIL-STD 810G testing<sup>7</sup>, and has an optional removable dust filter<sup>4</sup>.

### Featuring

- Power through your day with Windows 10 Pro with built-in security, collaboration, and connectivity.<sup>1</sup>
- Protect the firmware that antivirus can't reach! The hardware-enforced self-healing protection offered by HP Sure Start Gen4 automatically recovers the BIOS from malware, rootkits, or corruption.<sup>2</sup>
- Keep your critical applications and processes running even if malware tries to shut them down with self-healing protection.<sup>8</sup>
- Help protect your PC from websites, attachments, malware, ransomware, and viruses with hardware-enforced security from HP Sure Click.<sup>9</sup>
- Quickly and securely restore PCs to the latest image using a network connection with optional HP Sure Recover.<sup>10</sup>
- ITDMs can quickly help create, improve, and secure custom Windows images with HP Image Assistant Gen3.
- The HP Manageability Integration Kit helps speed up image creation and management of hardware, BIOS, and security through Microsoft System Center Configuration Manager.
- Keep data out of reach and defend against theft, attacks, and unauthorized users with HP Client Security Manager Gen4.

# HP EliteDesk 705 G4 Small Form Factor PC Specifications Table



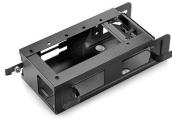
<b>Form Factor</b>	Small form factor
<b>Available Operating System</b>	Windows 10 Pro 64 – HP recommends Windows 10 Pro. <sup>1</sup> Windows 10 Home 64 <sup>1</sup> Windows 10 Home Single Language 64 <sup>1</sup> FreeDOS 2.0
<b>Available Processors<sup>3</sup></b>	AMD PRO A10-9700 APU with Radeon™ R7 Graphics (3.5 GHz base frequency, up to 3.8 GHz burst frequency, 2 MB cache, 4 cores); AMD PRO A6-9500 APU with Radeon™ R5 Graphics (3.5 GHz base frequency, up to 3.8 GHz burst frequency, 1 MB cache, 2 cores); AMD PRO A8-9600 APU with Radeon™ R7 Graphics (3.1 GHz base frequency, up to 3.4 GHz burst frequency, 2 MB cache, 4 cores); AMD Ryzen™ 5 2400G Quad-Core with Radeon™ RX Vega 11 Graphics (3.6 GHz base frequency, up to 3.9 GHz burst frequency, 6 MB cache); AMD Ryzen™ 3 2200G Quad-Core with Radeon™ Vega 8 Graphics (3.5 GHz base frequency, up to 3.7 GHz burst frequency, 6 MB cache)
<b>Chipset</b>	AMD B350 FCH
<b>Maximum Memory</b>	Up to 64 GB DDR4-2666 SDRAM Standard memory note: Transfer rates up to 2666 MT/s.
<b>Memory slots</b>	4 DIMM
<b>Internal Storage</b>	500 GB up to 2 TB 7200 rpm SATA HDD <sup>7</sup> up to 500 GB SATA SED <sup>7</sup> 128 GB up to 512 GB SATA SSD <sup>7</sup> 256 GB up to 512 GB SATA SED Opal 2 SSD <sup>7</sup> 256 GB up to 512 GB PCIe® NVMe™ SSD <sup>7</sup> 128 GB up to 1 TB PCIe® NVMe™ TLC M.2 SSD <sup>7</sup> 256 GB up to 512 GB PCIe® NVMe™ SED Opal 2 TLC M.2 SSD <sup>7</sup>
<b>Additional Storage</b>	5-in-1 SD card reader
<b>Optical Storage</b>	HP 9.5 mm Slim DVD-Writer; HP 9.5 mm Slim DVD-ROM
<b>Available Graphics</b>	Integrated: AMD Radeon™ R5 Graphics; AMD Radeon™ R7 Graphics; AMD Radeon™ Vega 8 Graphics; AMD Radeon™ RX Vega 11 Graphics Discrete: AMD Radeon™ R7 430 Graphics (2 GB GDDR5 dedicated) <sup>11</sup>
<b>Audio</b>	Conexant CX20632 codec, universal audio jack front port, audio line in and out rear ports (3.5 mm), multi-streaming capable
<b>Communications</b>	LAN: Realtek RTL8111EPH GbE WLAN: Intel® Dual Band Wireless-AC 9260 802.11ac (2x2) and Bluetooth® 5 M.2, non-vPro™; Realtek 802.11a/b/g/n/ac (2x2) and Bluetooth® 4.2 Combo
<b>Expansion Slots</b>	1 M.2 2230; 1 M.2 2230/2280; 1 PCIe 3 x16; 1 PCIe 3 x1 (1 M.2 slot for WLAN and 1 M.2 2230/2280 slot for storage.)
<b>Ports and Connectors</b>	Front: 1 headset connector; 1 USB 2.0; 1 USB 2.0 (fast charging); 1 USB Type-C™ (charging); 2 USB 3.1 Gen 1 Rear: 1 audio-in; 1 audio-in/out; 1 power connector; 1 RJ-45; 2 DisplayPort™ 1.2; 2 USB 3.1 Gen 1; 4 USB 2.0; 1 configurable video port <sup>13,30</sup> Optional: 1 serial; 1 serial and PS/2 ports combination
<b>Internal Drive Bays</b>	One 3.5" HDD; Two 2.5" HDD <sup>12</sup>
<b>Input Device</b>	HP PS/2 Business Slim Keyboard; HP USB Conferencing Keyboard; USB Business Slim Wired Keyboard; HP USB Business Slim Smart Card (CCID) Keyboard HP PS/2 Mouse; HP USB 1000 dpi Laser Mouse; HP USB Optical Mouse <sup>14</sup>
<b>Available Software</b>	Absolute Persistence module; HP ePrint Driver + JetAdvantage; HP Hotkey Support; HP Jumpstart; HP Noise Cancellation Software; HP PhoneWise; HP Recovery Manager; HP Secure Erase; HP Support Assistant; HP Velocity; Microsoft Defender; Native Miracast Support; HP Wireless Wakeup; Buy Office (sold separately); HP LAN-Wireless Protection; HP Sure Recover <sup>4,15,16,17,18,19,20,21</sup>
<b>Security Management</b>	DriveLock; Hood sensor; HP BIOSphere; HP Credential Manager; HP Device Access Manager; HP Password Manager; HP Power On Authentication; HP Security Manager; HP Spare Key; Power-on password (via BIOS); RAID configurations; SATA port disablement (via BIOS); Serial enable/disable (via BIOS); Setup password (via BIOS); Support for chassis padlocks and cable lock devices; USB enable/disable (via BIOS); Master Boot Record Security; HP Client Security Suite Gen 4; HP Sure Start Gen 4; Pre-boot Authentication; HP Sure Run; Trusted Platform Module TPM 2.0 Embedded Security Chip shipped with Windows 10 (Common Criteria EAL4+ Certified)(FIPS 140-2 Level 2 Certified) <sup>6,24,25,26,27,28,29</sup>
<b>Management Features</b>	HP BIOS Config Utility (download); HP Client Catalog (download); HP Driver Packs (download); HP System Software Manager (download); Update BIOS via Cloud or Network (BIOS feature); Ivanti Management Suite; HP Management Integration Kit for Microsoft System Center Configuration Management Gen 2 <sup>5,22,23</sup>
<b>Power</b>	180 W internal power supply, up to 92% efficiency, active PFC
<b>Dimensions</b>	9.5 x 27 x 29.6 cm
<b>Weight</b>	4.53 kg (Exact weight depends on configuration.)
<b>Environmental</b>	Low halogen <sup>10</sup>
<b>Energy Efficiency Compliance</b>	ENERGY STAR® certified; EPEAT® Gold registered; CECP; SEPA; CCC <sup>9</sup>
<b>Warranty</b>	3 year (3-3-3) limited warranty and service offering includes 3 years of parts, labor and on-site repair. Terms and conditions vary by country. Certain restrictions and exclusions apply.

## HP EliteDesk 705 G4 Small Form Factor PC

### Accessories and services (not included)

---

#### HP DM VESA Power Supply Holder Kit



Simplify cable management when mounting your HP Desktop Mini with the HP DM VESA Power Supply Holder Kit, which attaches to your HP Desktop Mini Security/Dual VESA Sleeve v2 (2JA32AA) to reduce cable clutter from the PC's power supply cable and brick.

**Product number: 1RL87AA**

---

#### HP B300 PC Mounting Bracket



Customize an altogether better solution with the HP B300 PC Mounting Bracket, which lets you attach your HP Workstation, HP Desktop Mini, HP Chromebox or select HP Thin Client directly behind select 2017 and 2018 HP EliteDisplays and HP Z Displays.<sup>1</sup>

**Product number: 2DW53AA**

---

#### HP Desktop Mini Security/Dual VESA Sleeve v2



Wrap your HP Desktop Mini PC in the HP Desktop Mini Security/Dual VESA Sleeve v2 to securely mount it—with or without an Expansion Module<sup>1</sup>—behind your display, position the solution on a wall, and lock it down with the integrated security bracket and optional HP Ultra-Slim Cable Lock.

**Product number: 2JA32AA**

---

#### HP 5 year Next Business Day Onsite Hardware Support for Desktops

Receive 5 years of next business day onsite HW Support from an HP-qualified technician for your computing device, if the issue cannot be solved remotely.

**Product number: U7899E**



## HP EliteDesk 705 G4 Small Form Factor PC

### Messaging Footnotes

- <sup>1</sup> Not all features are available in all editions or versions of Windows. Systems may require upgraded and/or separately purchased hardware, drivers, software or BIOS update to take full advantage of Windows functionality. Windows 10 is automatically updated, which is always enabled. ISP fees may apply and additional requirements may apply over time for updates. See <http://www.windows.com>.
- <sup>2</sup> HP Sure Start Gen4 is available on HP Elite and HP Pro 600 products equipped with 8th generation Intel® or AMD processors.
- <sup>3</sup> Multi-core is designed to improve performance of certain software products. Not all customers or software applications will necessarily benefit from use of this technology. Performance and clock frequency will vary depending on application workload and your hardware and software configurations. AMD's numbering is not a measurement of clock speed.
- <sup>4</sup> Sold separately or as an optional feature.
- <sup>5</sup> HP Manageability Integration Kit can be downloaded from <http://www8.hp.com/us/en/ads/clientmanagement/overview.html>.
- <sup>6</sup> HP Total Test Process testing is not a guarantee of future performance under these test conditions. Accidental damage requires an optional HP Accidental Damage Protection Care Pack.
- <sup>7</sup> MIL-STD testing is pending and is not intended to demonstrate fitness for U.S. Department of Defense contract requirements or for military use. Test results are not a guarantee of future performance under these test conditions. Damage under the MIL STD test conditions or any accidental damage requires an optional HP Accidental Damage Protection Care Pack.
- <sup>8</sup> HP Sure Run is available on HP Elite products equipped with 8th generation Intel® or AMD processors.
- <sup>9</sup> HP Sure Click is available on select HP platforms and supports Microsoft® Internet Explorer, Google Chrome, and Chromium™. Supported attachments include Microsoft Office (Word, Excel, PowerPoint) and PDF files in read only mode. Check <http://h20195.www2.hp.com/v2/GetDocument.aspx?docname=4AA7-0922ENW> for all compatible platforms as they become available.
- <sup>10</sup> HP Sure Recover is available on HP Elite PCs with 8th generation Intel® or AMD processors and requires an open, wired network connection. Not available on platforms with multiple internal storage drives or Intel® Optane™. You must back up important files, data, photos, videos, etc. before using HP Sure Recover to avoid loss of data.
- <sup>11</sup> HP Client Security Manager Gen4 requires Windows and Intel® or AMD 8th Gen processors.

### Technical specifications disclaimers

- <sup>1</sup> Not all features are available in all editions or versions of Windows. Systems may require upgraded and/or separately purchased hardware, drivers, software or BIOS update to take full advantage of Windows functionality. Windows 10 is automatically updated, which is always enabled. ISP fees may apply and additional requirements may apply over time for updates. See <http://www.windows.com>.
- <sup>2</sup> Multi-core is designed to improve performance of certain software products. Not all customers or software applications will necessarily benefit from use of this technology. Performance and clock frequency will vary depending on application workload and your hardware and software configurations. AMD's numbering is not a measurement of clock speed.
- <sup>4</sup> Native Miracast Support: is a wireless technology your PC can use to project your screen to TVs, projectors, and streaming.
- <sup>5</sup> HP Driver Packs: not preinstalled, however available for download at <http://www.hp.com/go/clientmanagement>
- <sup>6</sup> HP BIOSphere: HP BIOSphere Gen4 features may vary depending on the PC platform and configurations requires 8th Gen Intel® processors.
- <sup>7</sup> For hard drives and solid state drives, GB = 1 billion bytes. TB = 1 trillion bytes. Actual formatted capacity is less. Up to 16 GB (for Windows 7) and 36 GB (for Windows 8.1/10) of system disk is reserved for the system recovery software.
- <sup>8</sup> NOTE: Your product does not support Windows 8 or Windows 7. In accordance with Microsoft's support policy, HP does not support the Windows 8 or Windows 7 operating system on products configured with Intel® and AMD 7th generation and forward processors or provide any Windows 8 or Windows 7 drivers on <http://www.support.hp.com>
- <sup>9</sup> EPEAT® registered where applicable. EPEAT registration varies by country. See [www.epeat.net](http://www.epeat.net) for registration status by country. See HP's 3rd party option store for solar energy accessory at [www.hp.com/go/options](http://www.hp.com/go/options).
- <sup>10</sup> External power supplies, power cords, cables and peripherals are not low halogen. Service parts obtained after purchase may not be low halogen.
- <sup>11</sup> Sold separately or as an optional feature.
- <sup>12</sup> Two 2.5" HDD: SFF can be configured with either (1) 3.5" or (2) 2.5" internal storage drive (2.5 inch drive needs adapter).
- <sup>13</sup> (2) USB 3.1 Gen 1 (5 Gbit/s): allows for wake from S4/S5 with keyboard/mouse when connected and enabled in BIOS.
- <sup>14</sup> USB Antimicrobial Mouse: Not available in all regions; HP USB Hardened Mouse: Not available in all regions.
- <sup>15</sup> HP Secure Erase: for the methods outlined in the National Institute of Standards and Technology Special Publication 800-88. Supported on Elite platforms with BIOS version F.03 or higher.
- <sup>16</sup> Absolute Persistence module: Absolute agent is shipped turned off, and will be activated when customers activate a purchased subscription. Subscriptions can be purchased for terms ranging multiple years. Service is limited, check with Absolute for availability outside the U.S. The Absolute Recovery Guarantee is a limited warranty. Certain conditions apply. For full details visit: <http://www.absolute.com/company/legal/agreements/computrace-agreement>. Data Delete is an optional service provided by Absolute Software. If utilized, the Recovery Guarantee is null and void. In order to use the Data Delete service, customers must first sign a Pre-Authorization Agreement and either obtain a PIN or purchase one or more RSA SecurID tokens from Absolute Software.
- <sup>17</sup> HP ePrint Driver + JetAdvantage: requires an Internet connection to HP web-enabled printer and HP ePrint account registration (for a list of eligible printers, supported documents and image types and other HP ePrint details, see [www.hp.com/go/eprintcenter](http://www.hp.com/go/eprintcenter)). Print times and connection speeds may vary.
- <sup>18</sup> HP Support Assistant: requires Windows and Internet access.
- <sup>19</sup> Microsoft Defender: Microsoft Defender Opt in and internet connection required for updates.
- <sup>20</sup> HP PhoneWise: HP PhoneWise Client is only available on select platforms. For supported platforms and HP PhoneWise system requirements see [www.hp.com/go/HPPhoneWise](http://www.hp.com/go/HPPhoneWise)
- <sup>21</sup> HP Sure Recover: is available on HP Elite PCs with 8th generation Intel® or AMD processors and requires an open, wired network connection. You must back up important files, data, photos, videos, etc. before using HP Sure Recover to avoid loss of data.
- <sup>22</sup> HP Management Integration Kit for Microsoft System Center Configuration Management Gen 2: HP Manageability Integration Kit can be downloaded from <http://www8.hp.com/us/en/ads/clientmanagement/overview.html>
- <sup>23</sup> Ivanti Management Suite: subscription required.
- <sup>24</sup> HP Client Security Suite Gen 4: requires Windows and Intel® or AMD 8th generation processors.
- <sup>25</sup> HP Password Manager: requires Internet Explorer or Chrome or Firefox. Some websites and applications may not be supported. User may need to enable or allow the add-on / extension in the internet browser.
- <sup>26</sup> HP Sure Start Gen 4: is available on HP EliteBook products equipped with Intel® 8th generation processors.
- <sup>27</sup> Trusted Platform Module TPM 2.0 Embedded Security Chip shipped with Windows 10 (Common Criteria EAL4+ Certified)(FIPS 140-2 Level 2 Certified): Firmware TPM is version 2.0. Hardware TPM is v1.2, which is a subset of the TPM 2.0 specification version v0.89 as implemented by Intel Platform Trust Technology (PTT).
- <sup>28</sup> RAID configurations: is optional and does require a second hard drive.
- <sup>29</sup> HP Sure Run: is available on HP Elite products equipped with 8th generation Intel® or AMD processors.
- <sup>30</sup> Configurable video port: choice of DisplayPort™ 1.2, 1 HDMI™ 2.0, 1 VGA or USB Type-C™ Gen 1 (DisplayPort™).

### Sign up for updates

[www.hp.com/go/getupdated](http://www.hp.com/go/getupdated)

© Copyright 2018 HP Development Company, L.P. The information contained herein is subject to change without notice. The only warranties for HP products and services are set forth in the express warranty statements accompanying such products and services. Nothing herein should be construed as constituting an additional warranty. HP shall not be liable for technical or editorial errors or omissions contained herein.

Bluetooth is a trademark of its proprietor and used by HP Inc. under license. Microsoft, Windows, and the Windows Logo are trademarks or registered trademarks of Microsoft Corporation in the U.S. and other countries. Intel, the Intel logo, Intel Core, Ultrabook and Core Inside are trademarks or registered trademarks of Intel Corporation or its subsidiaries in the United States and other countries. USB Type-C™ and USB-C™ are trademarks of USB Implementers Forum. DisplayPort™ and the DisplayPort™ logo are trademarks owned by the Video Electronics Standards Association (VESA®) in the United States and other countries. All Rights Reserved. All other trademarks are the property of their respective owners.

