

## USB 3.0 Mini Dock Adapter with Gigabit Ethernet and HDMI®

USB31GEHD



\*actual product may vary from photos

DE: Bedienungsanleitung - [de.startech.com](http://de.startech.com)

FR: Guide de l'utilisateur - [fr.startech.com](http://fr.startech.com)

ES: Guía del usuario - [es.startech.com](http://es.startech.com)

IT: Guida per l'uso - [it.startech.com](http://it.startech.com)

NL: Gebruiksaanwijzing - [nl.startech.com](http://nl.startech.com)

PT: Guia do usuário - [pt.startech.com](http://pt.startech.com)

For the most up-to-date information, please visit: [www.startech.com](http://www.startech.com)

## FCC Compliance Statement

This equipment has been tested and found to comply with the limits for a Class B digital device, pursuant to part 15 of the FCC Rules. These limits are designed to provide reasonable protection against harmful interference in a residential installation. This equipment generates, uses and can radiate radio frequency energy and, if not installed and used in accordance with the instructions, may cause harmful interference to radio communications. However, there is no guarantee that interference will not occur in a particular installation. If this equipment does cause harmful interference to radio or television reception, which can be determined by turning the equipment off and on, the user is encouraged to try to correct the interference by one or more of the following measures:

- Reorient or relocate the receiving antenna.
- Increase the separation between the equipment and receiver.
- Connect the equipment into an outlet on a circuit different from that to which the receiver is connected.
- Consult the dealer or an experienced radio/TV technician for help.

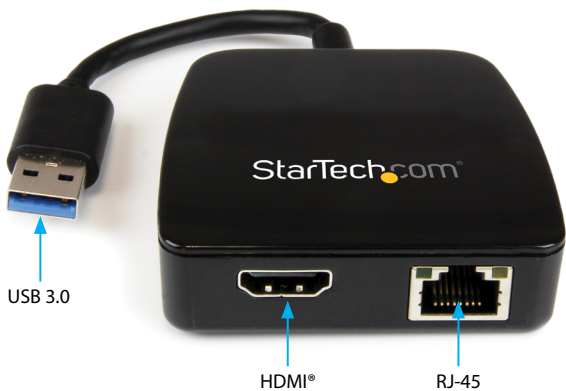
## Use of Trademarks, Registered Trademarks, and other Protected Names and Symbols

This manual may make reference to trademarks, registered trademarks, and other protected names and/or symbols of third-party companies not related in any way to StarTech.com. Where they occur these references are for illustrative purposes only and do not represent an endorsement of a product or service by StarTech.com, or an endorsement of the product(s) to which this manual applies by the third-party company in question. Regardless of any direct acknowledgement elsewhere in the body of this document, StarTech.com hereby acknowledges that all trademarks, registered trademarks, service marks, and other protected names and/or symbols contained in this manual and related documents are the property of their respective holders.

# Table of Contents

<b>Product Overview .....</b>	<b>1</b>
<b>Introduction .....</b>	<b>2</b>
Packaging Contents .....	2
System Requirements.....	2
<b>Installation .....</b>	<b>3</b>
Driver Installation.....	3
Hardware Installation .....	4
Verifying Installation.....	5
Multiple Adapter Installation.....	6
<b>Configuring the USB 3.0 Mini Dock Adapter .....</b>	<b>7</b>
Windows® .....	7
Mac OS.....	9
<b>Specifications.....</b>	<b>11</b>
<b>Technical Support .....</b>	<b>12</b>
<b>Warranty Information.....</b>	<b>12</b>

# Product Overview



# Introduction

## Packaging Contents

- 1x USB 3.0 Mini Docking Adapter
- 1x Instruction Manual
- 1x Driver CD

## System Requirements

- USB enabled computer system with an available USB 3.0 port
- Windows® 8 / 8.1 (32/64bit), 7 (32/64), Vista (32/64), XP (32/64), Windows Server® 2012, 2008 R2, 2003, Mac OS 10.6 and up (Tested up to 10.9)
- **Office Applications:**
  - CPU: i3 Dual core 2.8GHz
  - RAM: 2GB or higher
- **Full HD Video:**
  - CPU: Quad Core 2.4GHz or Higher (i5 recommended)
  - RAM: 4GB or higher

# Installation

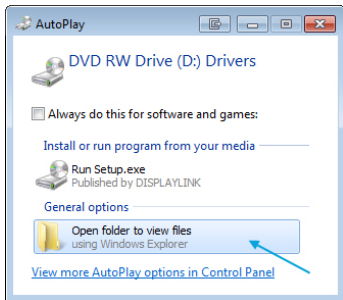
## Driver Installation

### Windows

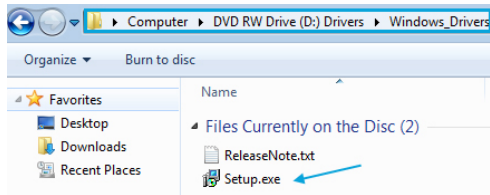
**Note:** Windows 8.1: Connect the USB 3.0 Mini Dock Adapter to your system via an available USB 3.0 port. Windows will automatically detect the adapter and install the required drivers.

For all other supported version of Windows, please ensure that the driver installation is complete prior to the physical installation (plugging in) of the USB 3.0 Mini Dock Adapter.

1. Download the latest drivers from the [www.startech.com](http://www.startech.com) website (recommended), or insert the included Driver CD into your computer's CD/DVD-ROM drive.
2. If AutoPlay is enabled, select the "Open folder to view files" option when the dialog appears.



3. If AutoPlay is disabled, browse to your CD/DVD drive location and open the "Setup.exe" application located in the "Windows\_Drivers" folder to start the installation process.



4. Follow any on-screen instructions to complete the software installation.

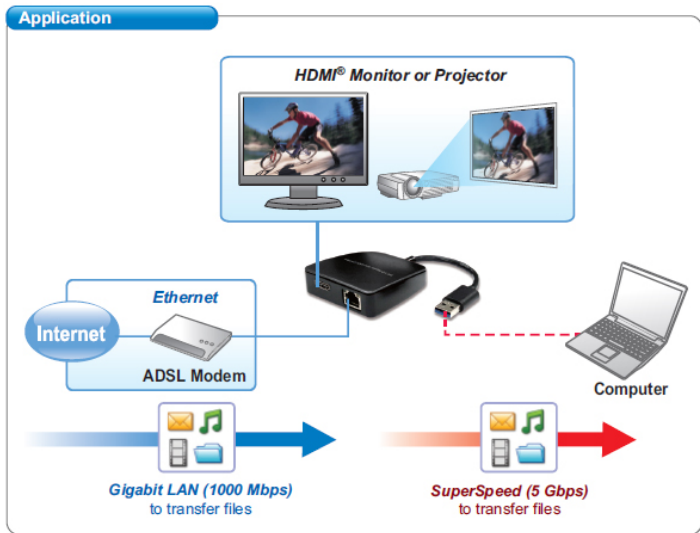
**Note:** You may be prompted to restart your system.

## Mac OS

Connect the USB 3.0 Mini Dock Adapter to your Mac via an available USB 3.0 port. The Mac OS will automatically detect the adapter and install the required drivers.

## Hardware Installation

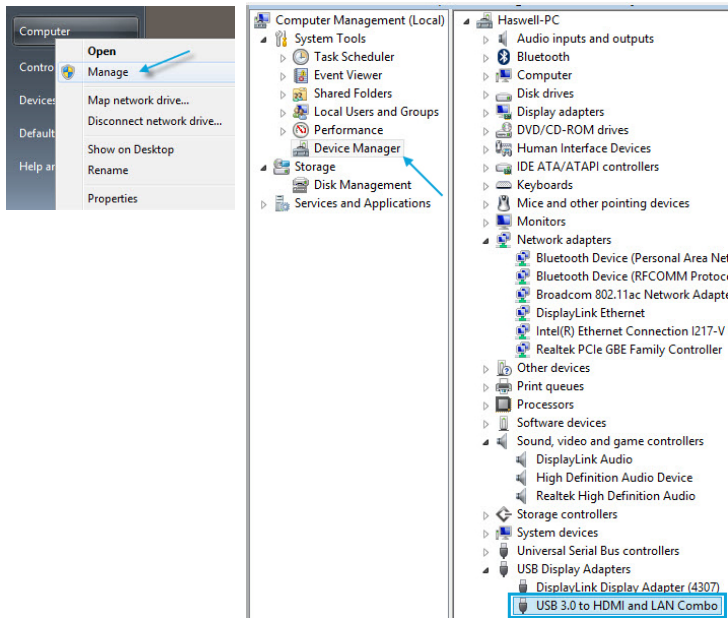
1. Connect the USB 3.0 Mini Dock Adapter to an available USB 3.0 port via the attached USB cable.  
**Note:** If connected to a USB 2.0 host port, performance may be limited.
2. Connect your HDMI® monitor to the HDMI® port on the adapter.
3. Connect your Cat 5e/6 network connection to the RJ-45 port on the adapter.



# Verifying Installation

## Windows

1. From the main desktop or start menu, right-click on “Computer” (“My Computer” in XP), then select “Manage.”
2. In the new Computer Management window, select Device Manager from the left window panel.

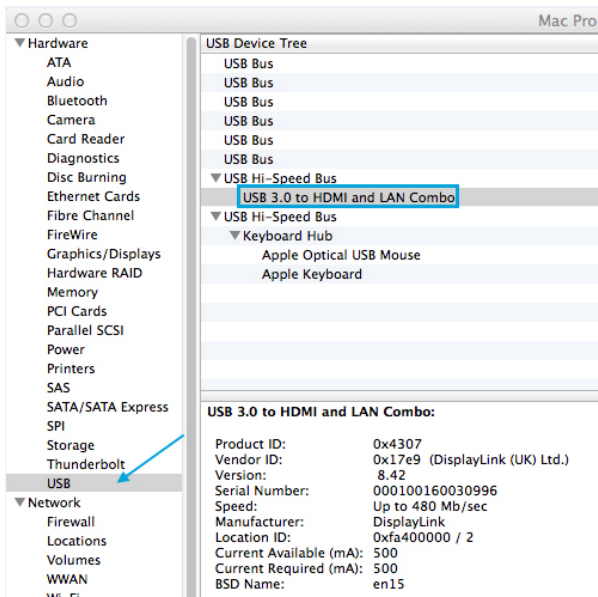


3. Under the “USB Display Adapters” category should be a “USB 3.0 to HDMI and LAN Combo” device. Right-click on the device and select “Properties” to make sure it is installed and working correctly.



## Mac OS

1. Open the “System Profiler” by clicking the Apple symbol in the top left corner, select “About this Mac”, then select “More Info.”
2. On the next screen, select “System Report” and under the “USB” heading within the “Hardware” category should be a “USB 3.0 to HDMI and LAN Combo” device.



## Multiple Adapter Installation

Multiple USB 3.0 Mini Dock Adapters can be used on a single system. The number of adapters and the performance of each adapter will depend entirely on your system's specifications.

1. Complete the standard driver installation steps, up to when you plug in the first USB adapter.
2. Connect another monitor/display to the second USB adapter, and turn on the display.

3. Connect the USB type "A" connector on the second USB adapter to an available USB 3.0 port on the host computer. The driver installation will begin automatically.

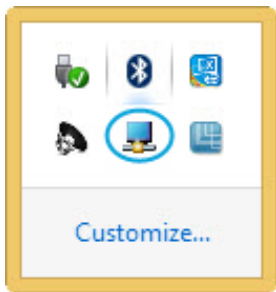
Repeat these steps for each additional USB adapter you wish to install. Once all USB adapters are installed, reboot the comp

## Configuring the USB 3.0 Mini Dock Adapter Windows®

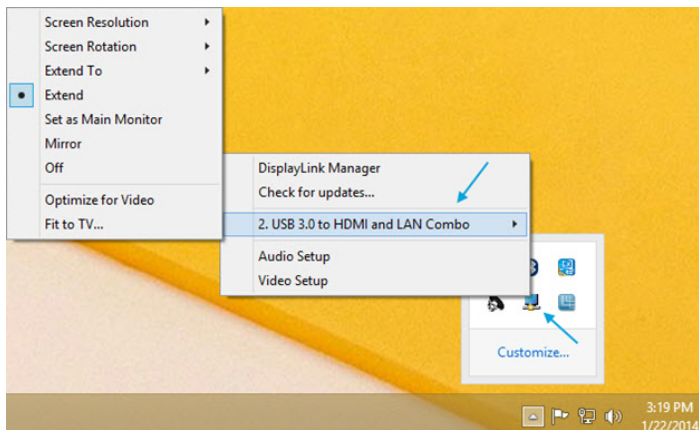
When display devices are attached, an icon appears in the taskbar. This gives you access to the DisplayLink® manager menu.

**Note:** Windows 8/7 users: The adapter drivers also allow for adjustments through the Windows built-in Display Settings window. These settings can be accessed by right-clicking on the Windows Desktop and selecting "Screen Resolution."

1. From the taskbar, if needed, click the Show hidden icons arrow to show all available icons.



2. Click the DisplayLink icon. You will see a "USB 3.0 to HDMI and LAN Combo" option, selecting this display will extend a sub menu with the configurable options for the connected device. Each display is configured independently. All configuration options are shown and described below.



## Extend

The monitor attached to the USB 3.0 Mini Dock Adapter displays an extension of the user's active Windows desktop. The extra desktop area is a great productivity aid, allowing more applications or documents to be visible at a time. The device is now extended in the direction it was the last time the display was in this mode. For more control, use the "Extend To" submenu and select one of the options. This puts the device into extend mode, and places it to the Right/Left/Above/Below the main (primary) monitor.

## Mirror

The monitor attached to the USB 3.0 Mini Dock Adapter displays a duplication of the primary display. The resolution, color depth and refresh rate of the primary screen are replicated on the monitor connected to the adapter.

**Note:** If the monitors used are of different specifications, the system's primary graphics adapter will scale all settings to lower specification to maintain a uniform aspect ratio.

## Extend To

This option allows you to specify the physical location of the monitor connected to the USB 3.0 Mini Dock Adapter in relation to the systems on-board monitor.

## Screen Resolution

This option allows you to change the resolution on the monitor connected to the USB 3.0 Mini Dock Adapter. Simply select the desired option from the list of supported resolutions displayed in the sub menu.

## Screen Rotation

This option allows you to change orientation in which the screen is viewed. The two most common types of orientation are portrait and landscape.

## Set as Main Monitor

Selecting this option allows your computer to consider the monitor connected through the USB 3.0 Mini Dock Adapter as your primary monitor. Your primary monitor displays all system notifications, and takes priority with applications.

## Off

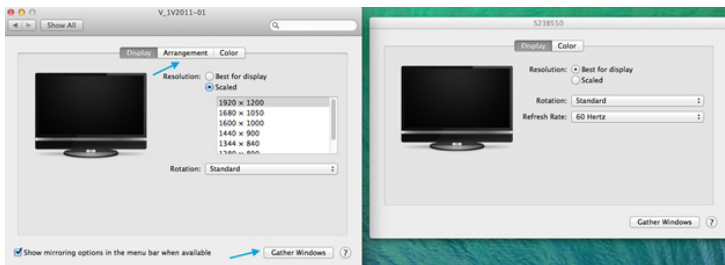
This option disables the monitor connected to the USB 3.0 Mini Dock Adapter.

## Mac OS

To configure the display settings and monitor positions, bring up the “Displays” preferences from the “System Preferences” menu.



The Display settings for each display will appear on the individual monitors themselves. To configure them all from a single location, press the “Gather Windows” button and each screen’s Displays Preferences windows will appear on that display. All supported video resolutions will appear. To change the positioning of each display, click on the “Arrangement” button (found only on the primary display) and you can then virtually reposition each display.



## Using the Adapter in Extended or Mirror Mode

By default the USB 3.0 Mini Dock Adapter will be setup as an extended display. To change the display as a mirrored/cloned display, check the “Mirror Display” box on the “Arrangement” page for that monitor’s Displays settings window. To return the monitor to an extended display, uncheck this option. To use both extended and mirrored displays simultaneously, turn off mirroring then in the “Arrangement” page press and hold the ‘cmd’ and ‘alt’ keys and drag and drop the display you wish to mirror over the primary display (shown with the white bar). Repeat this with each display you wish to mirror, all others will act as an extended display.

## Changing the Primary Display

You can change which display is the primary display by moving the Menu Bar between displays. Changing the primary display affects where new windows appear. To move the Menu Bar, click the white menu bar and drag it to the display you wish to become the primary.

## Media Playback

Please note that while operating in Extended Mode, the USB 3.0 Mini Dock Adapter can display media files and DVDs using a broad variety of media players, however in Clone Mode, limited support is available for video playback.

# Specifications

<b>Bus Type</b>	USB 3.0
<b>Chipset ID</b>	DisplayLink - DL3700N
<b>Industry Standards</b>	IEEE 802.3, IEEE 802.3u, IEEE 802.3ab, USB 3.0
<b>Connector Type(s)</b>	1x USB 3.0 A (9 pin; SuperSpeed) Male 1x HDMI (19 pin) Female 1x RJ-45 Female
<b>Auto MDIX</b>	Yes
<b>Compatible Networks</b>	10/100/1000 Mbps
<b>Full Duplex Support</b>	Yes
<b>Maximum Data Transfer Rate</b>	5 Gbps (USB 3.0) 2 Gbps (Ethernet; Full-Duplex)
<b>Maximum Digital Resolutions</b>	1920x1200
<b>Type and Rate</b>	USB 3.0 - 5 Gbit/s
<b>OS Compatibility</b>	Windows® 8 / 8.1 (32/64bit), 7 (32/64), Vista (32/64), XP (32/64), Windows Server® 2012, 2008 R2, 2003, Mac OS 10.6 and up (Tested up to 10.9)
<b>Cable Length</b>	3.98 in [101mm]
<b>Product Dimensions (LxWxH)</b>	180mm x 64mm x 19mm
<b>Product Weight</b>	1.59 oz [45 g]
<b>Power Adapter Included</b>	USB-Powered
<b>Humidity</b>	10-90% RH
<b>Operating Temperature</b>	0°C to 40°C (32°F to 104°F)
<b>Storage Temperature</b>	-20°C to 70°C (-4°F to 158°F)

# Technical Support

StarTech.com's lifetime technical support is an integral part of our commitment to provide industry-leading solutions. If you ever need help with your product, visit [www.startech.com/support](http://www.startech.com/support) and access our comprehensive selection of online tools, documentation, and downloads.

For the latest drivers/software, please visit [www.startech.com/downloads](http://www.startech.com/downloads)

## Warranty Information

This product is backed by a two year warranty.

In addition, StarTech.com warrants its products against defects in materials and workmanship for the periods noted, following the initial date of purchase. During this period, the products may be returned for repair, or replacement with equivalent products at our discretion. The warranty covers parts and labor costs only. StarTech.com does not warrant its products from defects or damages arising from misuse, abuse, alteration, or normal wear and tear.

### Limitation of Liability

In no event shall the liability of StarTech.com Ltd. and StarTech.com USA LLP (or their officers, directors, employees or agents) for any damages (whether direct or indirect, special, punitive, incidental, consequential, or otherwise), loss of profits, loss of business, or any pecuniary loss, arising out of or related to the use of the product exceed the actual price paid for the product. Some states do not allow the exclusion or limitation of incidental or consequential damages. If such laws apply, the limitations or exclusions contained in this statement may not apply to you.

Hard-to-find made easy. At StarTech.com, that isn't a slogan. It's a promise.

StarTech.com is your one-stop source for every connectivity part you need. From the latest technology to legacy products — and all the parts that bridge the old and new — we can help you find the parts that connect your solutions.

We make it easy to locate the parts, and we quickly deliver them wherever they need to go. Just talk to one of our tech advisors or visit our website. You'll be connected to the products you need in no time.

Visit [www.startech.com](http://www.startech.com) for complete information on all StarTech.com products and to access exclusive resources and time-saving tools.

*StarTech.com is an ISO 9001 Registered manufacturer of connectivity and technology parts. StarTech.com was founded in 1985 and has operations in the United States, Canada, the United Kingdom and Taiwan servicing a worldwide market.*