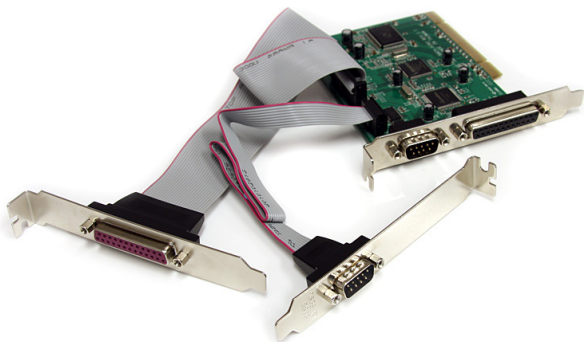


## PCI Serial/Parallel Combo Card with 16C1050 UART - 2 Port Serial, 2 Port Parallel

PCI2S2PMC



\*actual product may vary from photos

DE: Bedienungsanleitung - [de.startech.com](http://de.startech.com)

FR: Guide de l'utilisateur - [fr.startech.com](http://fr.startech.com)

ES: Guía del usuario - [es.startech.com](http://es.startech.com)

IT: Guida per l'uso - [it.startech.com](http://it.startech.com)

NL: Gebruiksaanwijzing - [nl.startech.com](http://nl.startech.com)

PT: Guia do usuário - [pt.startech.com](http://pt.startech.com)

For the most up-to-date information, please visit: [www.startech.com](http://www.startech.com)

## FCC Compliance Statement

This equipment has been tested and found to comply with the limits for a Class B digital device, pursuant to part 15 of the FCC Rules. These limits are designed to provide reasonable protection against harmful interference in a residential installation. This equipment generates, uses and can radiate radio frequency energy and, if not installed and used in accordance with the instructions, may cause harmful interference to radio communications. However, there is no guarantee that interference will not occur in a particular installation. If this equipment does cause harmful interference to radio or television reception, which can be determined by turning the equipment off and on, the user is encouraged to try to correct the interference by one or more of the following measures:

- Reorient or relocate the receiving antenna.
- Increase the separation between the equipment and receiver.
- Connect the equipment into an outlet on a circuit different from that to which the receiver is connected.
- Consult the dealer or an experienced radio/TV technician for help.

## Use of Trademarks, Registered Trademarks, and other Protected Names and Symbols

This manual may make reference to trademarks, registered trademarks, and other protected names and/or symbols of third-party companies not related in any way to StarTech.com. Where they occur these references are for illustrative purposes only and do not represent an endorsement of a product or service by StarTech.com, or an endorsement of the product(s) to which this manual applies by the third-party company in question. Regardless of any direct acknowledgement elsewhere in the body of this document, StarTech.com hereby acknowledges that all trademarks, registered trademarks, service marks, and other protected names and/or symbols contained in this manual and related documents are the property of their respective holders.

# Table of Contents

<b>Introduction</b> .....	<b>1</b>
Packaging Contents .....	1
System Requirements.....	1
<b>Installation</b> .....	<b>2</b>
Hardware Installation .....	2
Driver Installation.....	3
Verifying Installation .....	4
<b>Specifications</b> .....	<b>5</b>
<b>Technical Support</b> .....	<b>6</b>
<b>Warranty Information</b> .....	<b>6</b>

# Introduction

The PCI2S2PMC 2S2P PCI Serial Parallel Combo Card with 16C1050 UART adds 2 RS232 serial, and 2 IEEE 1284 Parallel ports to your system via a PCI slot.

Supporting RS232 speeds up to 115.2 Kbps and parallel rates up to 1.5 Mbps, the serial/parallel adapter offers the added connectivity needed for industrial and business applications while only occupying a single 3.3/5V PCI slot.

This 2S-2P card offers a broad operating system compatibility list that includes Windows® 7, Server 2003, XP, DOS® and Linux for simple integration into mixed environments.

## Packaging Contents

- 1 x PCI Serial/Parallel Combo Card
- 2 x Ribbon Cable with bracket
- 1 x Driver CD
- 1 x Instruction Manual

## System Requirements

- PCI enabled computer system with available full profile PCI slot
- Three adjacent Full (Standard) Profile expansion card slots
- Microsoft® Windows® NT 4.0/2000/XP/Server 2003/Vista/Server 2008 R2/7 (32/64-bit), or DOS® 6.2, or Linux® kernel 2.6.x

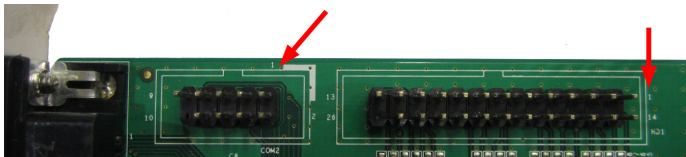
# Installation



**WARNING!** PCI cards, like all computer equipment, can be severely damaged by static electricity. Be sure that you are properly grounded before opening your computer case or touching your PCI card. StarTech.com recommends that you wear an anti-static strap when installing any computer component. If an anti-static strap is unavailable, discharge yourself of any static electricity build-up by touching a large grounded metal surface (such as the computer case) for several seconds. Also be careful to handle the PCI card by its edges and not the gold connectors.

## Hardware Installation

1. Turn your computer off and any peripherals connected to the computer (i.e. Printers, external hard drives, etc.). Unplug the power cable from the rear of the power supply on the back of the computer and disconnect all peripheral devices.
2. Remove the cover from the computer case. Refer to documentation for your computer system for details.
3. Locate an open PCI or PCI-X slot and remove the metal cover plate on the rear of the computer case. Remove the covers of two other adjacent expansion slots.
4. Connect the ribbon cables from the two expansion brackets to the headers on the card. The headers have the pins labeled on the card itself. Connector the ribbon cable, such that the red wire connectors to pin 1.



5. Gently insert the card into the open PCI or PCI-X slot and fasten the card's bracket to the rear of the case. Fasten the brackets from the two ribbon cables to the other open expansion slots.
6. Place the cover back onto the computer case.
7. Insert the power cable into the socket on the power supply and reconnect all other connectors removed in Step 1.

# Driver Installation

## Windows 2000/ XP/ Server 2003

**NOTE:** The parallel ports will install automatically, so no installation is required.

1. Upon starting Windows, if the "Found New Hardware" wizard appears on the screen, cancel/close the window and insert the included Driver CD into the computer's CD/DVD drive.
2. AutoPlay should automatically launch and display all of the folders on the CD. If not, open "My Computer" and double-click on the CD/DVD drive.
3. Enter the folder for your operating system version (i.e. "XP"), then the "UART" folder and double-click the file "Setup.exe".
4. This should launch the driver Installation wizard. Continue through the wizard and once complete, all the necessary drivers will be installed.
5. Reboot the computer to complete the installation.

## Windows Vista/ Server 2008 R2/ 7

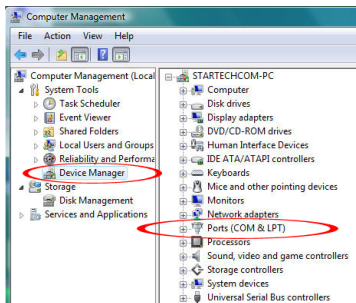
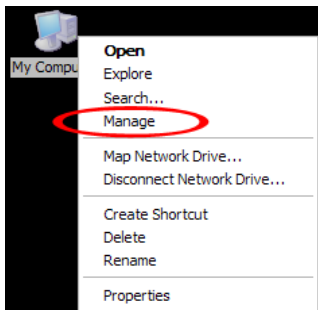
**NOTE:** The parallel ports will install automatically, so no installation is required.

1. Upon starting Windows, if the "Found New Hardware" wizard appears on the screen, cancel/close the window or choose not to install the drivers and insert the included Driver CD into the computer's CD/DVD drive.
2. AutoPlay should automatically launch and display all of the folders on the CD. If not, open "Computer" and double-click on the CD/DVD.
3. Enter the folder for your operating system version (i.e. "Win 7"), then the "UART" folder and double-click the file "Setup.exe".
4. This should launch the driver Installation wizard. Continue through the wizard and once complete, all the necessary drivers will be installed.
5. Reboot the computer to complete the installation.

# Verifying Installation

## Windows 2000/XP/Server 2003/Vista/Server 2008 R2/7

From the main desktop, right-click on “My Computer” (“Computer” in Vista/7), then select Manage. In the new Computer Management window, select Device Manager from the left window panel.



Double-click on the “Ports (COM & LPT)” option. Two additional COM ports and parallel ports should be listed.

# Specifications

<b>Host Interface</b>	PCI (32-bit, 3.3V/5V)
<b>Form Factor</b>	Standard Profile
<b>Chipset ID</b>	Systembase SB16C1052PCI Moschip MS9865IV-AA
<b>Connectors (External)</b>	2 x 9-pin DB9 male 2 x 25-pin DB25 female
<b>Serial Protocol</b>	RS-232
<b>Data Bits</b>	5, 6, 7, 8
<b>Parity</b>	None, Odd, Even, Space, Mark
<b>Stop Bits</b>	1, 1.5, 2
<b>Flow Control</b>	None, Xon/Xoff, RTS/CTS
<b>Parallel Modes</b>	EPP, ECP, SPP, PS2
<b>Maximum Data Rate</b>	Serial: 115.2 Kbps Parallel: 1.5 Mbps
<b>Operating Temperature</b>	0°C ~ 85°C (32°F ~ 185°F)
<b>Storage Temperature</b>	-45°C ~ 150°C (-49°F ~ 302°F)
<b>Humidity</b>	0% ~ 60% RH
<b>Dimensions</b>	133.0mm x 20.0mm x 89.0mm
<b>Weight</b>	80g
<b>Compatible Operating Systems</b>	Windows NT 4.0/ 2000/ XP/ Server 2003/ Vista/ Server 2008 R2/ 7 (32/64-bit), DOS 6.2, Linux kernel 2.6.x



# Technical Support

StarTech.com's lifetime technical support is an integral part of our commitment to provide industry-leading solutions. If you ever need help with your product, visit [www.startech.com/support](http://www.startech.com/support) and access our comprehensive selection of online tools, documentation, and downloads.

For the latest drivers/software, please visit [www.startech.com/downloads](http://www.startech.com/downloads)

## Warranty Information

This product is backed by a lifetime warranty.

In addition, StarTech.com warrants its products against defects in materials and workmanship for the periods noted, following the initial date of purchase. During this period, the products may be returned for repair, or replacement with equivalent products at our discretion. The warranty covers parts and labor costs only. StarTech.com does not warrant its products from defects or damages arising from misuse, abuse, alteration, or normal wear and tear.

### Limitation of Liability

In no event shall the liability of StarTech.com Ltd. and StarTech.com USA LLP (or their officers, directors, employees or agents) for any damages (whether direct or indirect, special, punitive, incidental, consequential, or otherwise), loss of profits, loss of business, or any pecuniary loss, arising out of or related to the use of the product exceed the actual price paid for the product. Some states do not allow the exclusion or limitation of incidental or consequential damages. If such laws apply, the limitations or exclusions contained in this statement may not apply to you.

Hard-to-find made easy. At StarTech.com, that isn't a slogan. It's a promise.

StarTech.com is your one-stop source for every connectivity part you need. From the latest technology to legacy products — and all the parts that bridge the old and new — we can help you find the parts that connect your solutions.

We make it easy to locate the parts, and we quickly deliver them wherever they need to go. Just talk to one of our tech advisors or visit our website. You'll be connected to the products you need in no time.

Visit **[www.startech.com](http://www.startech.com)** for complete information on all StarTech.com products and to access exclusive resources and time-saving tools.

*StarTech.com is an ISO 9001 Registered manufacturer of connectivity and technology parts. StarTech.com was founded in 1985 and has operations in the United States, Canada, the United Kingdom and Taiwan servicing a worldwide market.*