

B1200i



Built on proven BeyondRAID technology, this is application-optimized storage for small and medium sized businesses

Built on proven BeyondRAID™ technology, coupled with hybrid storage and innovative data tiering, the Drobo B1200i delivers a level of automation and technical sophistication usually reserved for more expensive enterprise solutions. And, this product is as easy to use as a personal Drobo.

The Drobo B1200i is perfect for small and medium sized businesses. It provides reliable, high-performance, and self-optimizing storage for server virtualization, email, and data protection. It integrates seamlessly into a TCP/IP network infrastructure and utilizes the industry-standard iSCSI protocol to provide powerful, yet simple, consolidated storage for your IT environment.

BeyondRAID Technology

A Drobo B1200i iSCSI array can hold up to 72TB of raw storage. To expand the storage capacity of an array, BeyondRAID enables additional disk drives to be inserted into empty drive bays. These new drives will automatically and transparently be configured for use in the array without user intervention. However, if all drive bays are occupied, simply replace the smallest capacity drive with a higher capacity one and BeyondRAID will do the rest.

Unlike traditional RAID arrays, the BeyondRAID technology in Drobo enables different drive capacities to work in the same unit. This enables future expansion as larger SAS and SATA drives become available. With Drobo, access to data is always maintained while it protects against simultaneous drive failures.

Hybrid Storage & Tiering

The Drobo B1200i moves beyond manually tuning an array for applications that have different storage requirements. Its ability to automatically tier frequently used transactional data from stored data that's seldom used

enables businesses to consolidate storage resources, and share that storage across all connected servers and their applications.

When using the hybrid storage option, Drobo leverages high-capacity hard disk drives (HDDs) and high-performance solid state drives (SSDs) to deliver application-optimized storage solution that requires no manual tuning.

Storage Pools

Drobo B1200i storage pools have increased as disk drive suppliers have grown the capacity of their Enterprise quality SAS and SATA drives. This Drobo supports a storage pool of 128TBs.

Smart Volumes & Thin Provisioning

Quickly create new volumes, up to 64TB in size, and manage them with ease. The innovative and timesaving Smart Volumes™ management technology with Thin Provisioning integrated into the Drobo B1200i allows the creation of up to 255 volumes. These volumes pull storage from the common pool of disks rather than silo's of physical disks.

Optimizing Business Applications

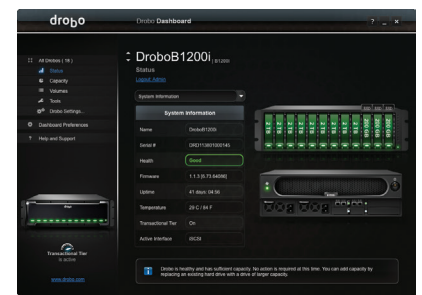
Similar to business applications, Drobo is ideal for building a server virtualization cluster, highly available email server, or scalable backup server. Drobo technology has been certified for VMware vSphere, Symantec Backup Exec, and Veeam Backup environments.

Designed for IT Environments

The B1200i is the first Drobo with serviceable modular components: removable controller card; dual-redundant, hot-swappable power supplies; and a hot-swappable cooling fan unit. You can source field replaceable units in advance, to protect against a single hardware component

Drobo Dashboard

Drobo Dashboard is the single tool to centrally manage all of your Drobos. Drobo Dashboard displays status as if all of your Drobos were right in front of you with the same status lights and capacity gauge that are on the front panel. All administration tasks are a single click away. Simply, it's the easiest way to configure and manage business-class storage.



failure. This ensures maximum uptimes and delivers a higher level of availability demanded by virtualized IT environments.



Specifications

Connectivity	<ul style="list-style-type: none"> – 4 x Gigabit Ethernet ports (one dedicated to management) 	Hardware Features	<ul style="list-style-type: none"> – Carrier-less drive bays for 3.5" drives – Field replaceable controller card, power supplies and cooling fan unit
Drives and Expansion	<ul style="list-style-type: none"> – Up to 12 3.5" SAS 1/2 or SATA I/II/III hard drives or up to 3 solid state drives (with up to 9 hard drives). – Drives of any manufacturer, capacity, spindle speed and/or cache can be used. No tools or carriers required for 2.5" SSDs. – Expandable by adding drives or hot-swapping existing drives with larger ones 	Additional Software Features	<ul style="list-style-type: none"> – Hybrid Storage – Automated data tiering (available in firmware version 1.1.0 or higher) – Smart Volumes (LUNs, up to 255) – Drive Spin Down
BeyondRAID Features	<ul style="list-style-type: none"> – Thin Provisioning – Instant Expansion – Mixed Drive Size Utilization – Automatic Protection Levels – Single or Dual Disk Redundancy – Virtual Hot Spare – Data Aware – Drive Re-ordering 	Size and Weight	<ul style="list-style-type: none"> – 3U Rack Mount Form Factor (rack mount kit included) – Width: 17.17 in (436.1 mm) – Height: 5.2 in (132.1 mm) – Depth: 21.85 in (555 mm) – Weight: 47 lb (21.3 kg) without hard drives, power supply or packaging
Management	<ul style="list-style-type: none"> – Drive bay indicator lights, capacity gauge, status lights – Drobo Dashboard version 2.0 or later 	Warranty	<ul style="list-style-type: none"> – One (1) year warranty in the US or outside the EU or two (2) year warranty in the EU
Operating System Support	<ul style="list-style-type: none"> – Mac OS X 10.6 and higher – Windows 8/8.1 32- and 64-bit – Windows 7 32- and 64-bit – Windows XP SP3 32- and 64-bit – Windows Server 2012 32- and 64-bit – Windows Server 2008 R2 32- and 64-bit – Windows Server 2003 32- and 64-bit – Red Hat Enterprise Linux 6 (Intel only) – VMware vSphere ESXi 6.0 	Power and Cooling	<ul style="list-style-type: none"> – 3U Rack Mount Form Factor (rack mount kit included) – Width: 17.17 in (436.1 mm) – Height: 5.2 in (132.1 mm) – Depth: 21.85 in (555 mm) – Weight: 47lb (21.3 kg) without hard drives, power supply or packaging
File Systems Supported	<ul style="list-style-type: none"> – Mac OS X: HFS+ – Windows: NTFS – Linux: ext3 – VMware: VMFS 	Environmental Specifications	<ul style="list-style-type: none"> – Operating Temperature: 10°C – 35°C (50° – 95°F) – Non-Operating Temperature (storage): -10° – 60°C (14° – 140°F) – Operating Humidity: 20% – 80%
Network Protocols	<ul style="list-style-type: none"> – iSCSI – CHAP Authentication 	Ethernet Features	<ul style="list-style-type: none"> – Connection failover – Jumbo frames (up to 9000 bytes MTU)
Certifications	<ul style="list-style-type: none"> – Environmental: RoHS, WEEE, REACH – Regulatory: FCC Part 15 Class A; Canada ICES-003 Class B; CE Mark; CISPR22 Class B; MIC Mark; VCCI Approval to V.3; BSMI Approval to CNS13438; ACA Approval to AS/NZS 3548 – Safety: UL, cUL, TUV, CB 	Box Contents	<ul style="list-style-type: none"> – Drobo B1200i – 2 x 6ft (1.8 m) power cord with power supply – Rack mount parts – Rack Mount Installation Guide – Getting Started Guide – Drobo Resource CD, which includes the Drobo Dashboard application



2540 Mission College Blvd. Santa Clara, CA. 95054
www.drobo.com • 1.866.997.6268