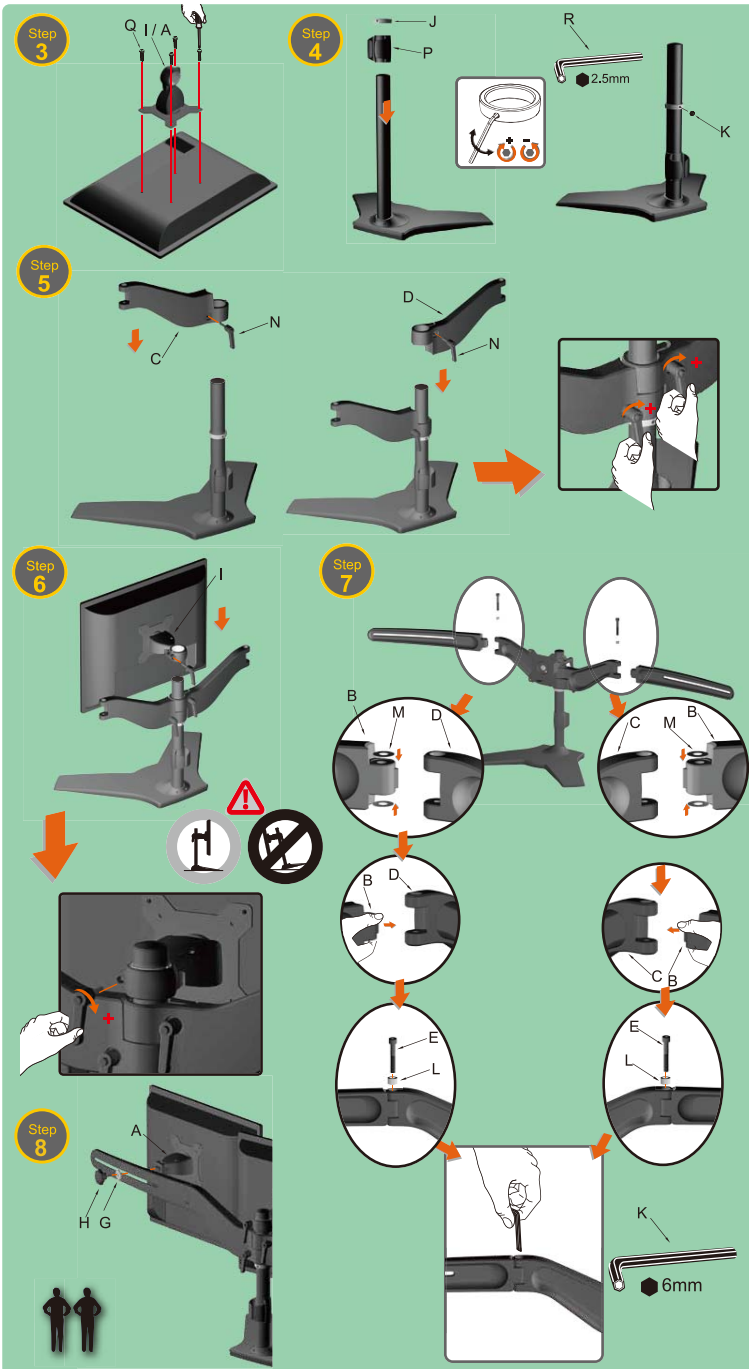


(Triple Type) Installation Process



Weight Capacity list

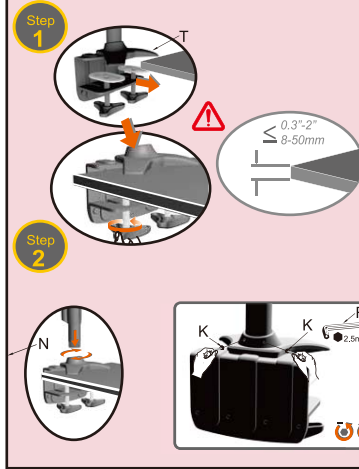
AMR3S	AMR3P	AMR3C	AMR6S	AMR6P	AMR6C
6 kg (17.6 lb)	6 kg (17.6 lb)	6 kg (17.6 lb)	6 kg (25.3 lb)	6 kg (25.3 lb)	6 kg (25.3 lb)

Caution

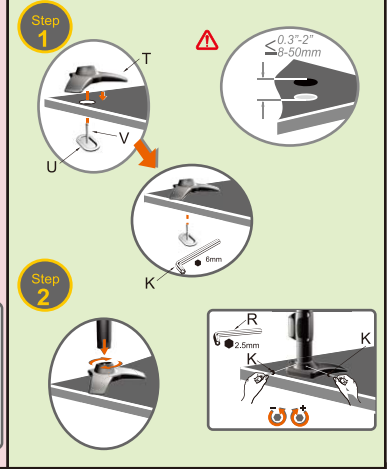
- To ensure safety, please read this manual carefully before installation and follow the instructions herein. Store this manual in a secure place for future reference.
- The manufacturer shall not be legally responsible for any equipment damage or personal injury caused by incorrect installation or operation other than that covered in this manual.
- The product is designed for easy installation and removal. The manufacturer shall not be liable for damage to equipment or personal injuries arising out of human factors or acts of God, such as earthquake or hurricane.

- It is recommended that the product be installed by qualified personnel only.
- Only install on horizontal desks and avoid slanted desk surfaces.
- To ensure safe installation, first check the structure of the desk and select a secure mounting location.
- The desk should be strong enough to sustain a weight of at least four times of the display and the product combined.

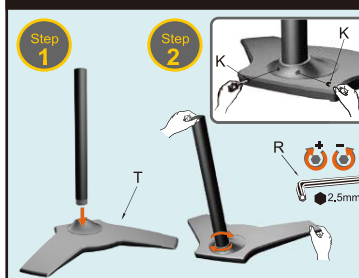
C SERIES Desk Clamp Base



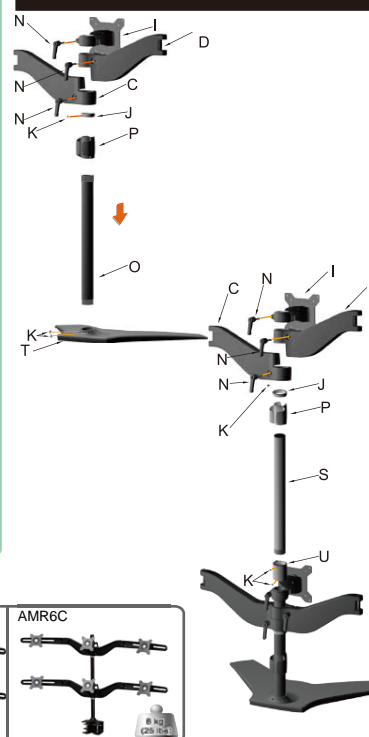
P SERIES Grommet Mount Base



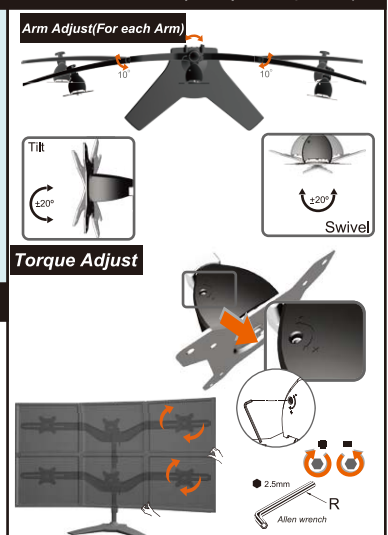
S SERIES Desk Stand



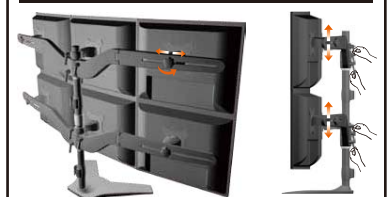
Additional Installation Process (For Sextette Model only)



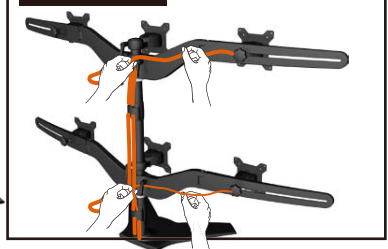
Swivel & Tilt ; Rotate(Pivot) / Torque Adjust



Horizontal & Vertical Adjust



Cable Management



- Do not modify any accessories or use broken parts. Contact your dealer with any questions.
- Tighten all screws (do not exert excessive force to avoid breaking the screw or damaging its thread).
- Since the manufacturer has no way to control the desk type and installation of this product, the warranty of the product shall only cover the body of the product.