



Philips Moda  
Slim monitor with Ultra  
Wide-Color

**C Line**

24 (23.8"/60.5 cm diag.)  
Full HD (1920 x 1080)

**245C7QJSB**



## Ultra Wide-Color in an ultra-slim design

The Moda display with Ultra Wide-Color features superb visuals, in our thinnest design yet. Crafted with premium materials, the thin display looks great on any desk. With an edge-to-edge Ultra Wide-Color display, images look bolder than ever

### **Superb Design**

- Elegant, slim design complements your home decor
- Minimalistic looks with Ultra-Narrow Bezel
- EasySelect menu toggle key for quick on-screen menu access

### **Superb Picture Quality**

- Ultra Wide-Color wider range of colours for a vivid picture
- IPS LED wide view technology for image and colour accuracy
- 16:9 Full HD display for crisp, detailed images
- Less eye fatigue with Flicker-Free technology
- SmartContrast for deep black level details
- SmartImage presets for easy optimised image settings

### **Experience immersive multimedia**

- HDMI-ready for Full HD entertainment
- DisplayPort connection for maximum visuals

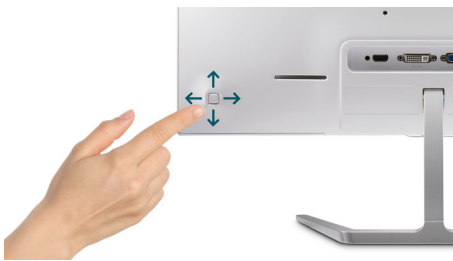
# PHILIPS

# Highlights

## Ultra-Narrow Bezel

Utilising the latest technology panels, the new Philips displays are designed with a minimalistic approach by limiting the outer bezel thickness to about 2.5 mm. Combined with an in-panel black matrix strip of around 9 mm, the overall bezel dimensions are reduced significantly, minimising distractions and maximising viewing size. Especially suited to multi-display or tiling setups like gaming, graphics design and professional applications, the Ultra-narrow bezel display gives you the feeling of using one large display.

## EasySelect Menu Toggle Key



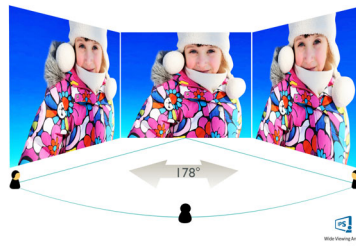
The discreetly placed EasySelect Menu Toggle Key allows you to make quick and easy adjustments to monitor settings in the On-Screen Display menu.

## Ultra Wide-Color Technology



Ultra Wide-Color Technology delivers a wider spectrum of colours for a more brilliant picture. The Ultra Wide-Color wider "colour gamut" produces more natural-looking greens, vivid reds and deeper blues. Bring media entertainment, images and even productivity more alive with vivid colours from Ultra Wide-Color Technology.

## IPS technology



IPS displays use an advanced technology that gives you extra-wide viewing angles of 178/178 degrees, making it possible to view the display from almost any angle. Unlike standard TN panels, IPS displays give you remarkably crisp images with vivid colours, making them ideal not only for Photos, movies and web browsing, but also for professional applications that demand colour accuracy and consistent brightness at all times.

## 16:9 Full HD display



Picture quality matters. Regular displays deliver quality, but you expect more. This display features enhanced Full HD 1920 x 1080 resolution. With Full HD for crisp detail paired with high brightness, incredible contrast and realistic colours, expect a true-to-life picture.

## Flicker-Free technology



Due to the way brightness is controlled on LED-backlit screens, some users experience

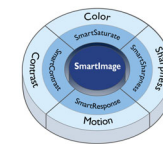
flicker on their screen which causes eye fatigue. Philips Flicker-Free technology applies a new solution to regulate brightness and reduce flicker for more comfortable viewing.

## SmartContrast



SmartContrast is a Philips technology that analyses the contents you are displaying, automatically adjusting colours and controlling backlight intensity to dynamically enhance contrast for the best digital images and videos or when playing games where dark hues are displayed. When Economy mode is selected, contrast is adjusted and backlighting fine-tuned for just-right display of everyday office applications and lower power consumption.

## SmartImage



SmartImage is an exclusive leading edge Philips technology that analyses the content displayed on your screen and optimises your display performance. This user-friendly interface allows you to select various modes, like Office, Photo, Movie, Game, Economy etc., to fit the application in use. Based on the selection, SmartImage dynamically optimises the contrast, colour saturation and sharpness of images and videos for ultimate display performance. The Economy mode option offers you major power savings. All in real time at the touch of a single button!



# Specifications

## Picture/Display

- LCD panel type: IPS technology
- Backlight type: W-LED system
- Panel Size: 23.8 inch/60.5 cm
- Effective viewing area: 527.04 (H) x 296.46 (V)
- Aspect ratio: 16:9
- Optimum resolution: 1920 x 1080 @ 60 Hz
- Pixel Density: 92.56 PPI
- Response time (typical): 5 ms (Grey to Grey)\*
- Brightness: 250 cd/m<sup>2</sup>
- Contrast ratio (typical): 1000:1
- SmartContrast: 20,000,000:1
- Pixel pitch: 0.274 x 0.274 mm
- Viewing angle: 178° (H)/178° (V), @ C/R > 10
- Flicker-free
- Picture enhancement: SmartImage
- Colour gamut (typical): NTSC 101.4% (CIE1976)\*
- Display colours: 16.7 M
- Scanning Frequency: 54 - 88 kHz (H) / 48 - 75 Hz (V)
- sRGB

## Connectivity

- Signal Input: VGA (Analogue), DisplayPort 1.2, HDMI (digital, HDCP)
- Sync Input: Separate Sync, Sync on Green
- Audio (In/Out): Audio out

## Convenience

- User convenience: Menu/OK, Input/Up, SmartImage/Return, Volume/Down, Power On/Off
- Control software: SmartControl
- OSD Languages: Brazil Portuguese, Czech, Dutch, English, Finnish, French, German, Greek, Hungarian, Italian, Japanese, Korean, Polish, Portuguese, Russian, Simplified Chinese, Spanish, Swedish, Traditional Chinese, Turkish, Ukrainian
- Other convenience: Kensington lock
- Plug and Play Compatibility: DDC/CI, Mac OS X, sRGB, Windows 10 / 8.1 / 8 / 7

## Stand

- Tilt: -5/20 degree degree

## Power

- On mode: 13.65 W (typ.) (EnergyStar 7.0 test method)
- Standby mode: 0.3 W (typ.)
- Off mode: 0.3 W (typ.)
- Power LED indicator: Operation - White, Standby mode - White (flashing)
- Power supply: External, 100-240 VAC, 50-60 Hz

## Dimensions

- Product with stand (mm): 541 x 412 x 197 mm
- Product without stand (mm): 541 x 323 x 31 mm
- Packaging in mm (W x H x D): 603 x 484 x 245 mm

## Weight

- Product with stand (kg): 2.87 kg
- Product with packaging (kg): 5.30 kg

## Operating conditions

- Temperature range (operation): 0 to 40 °C
- Temperature range (storage): -20 to 60 °C
- Relative humidity: 20-80% %
- Altitude: Operation: +12,000 ft (3658 m), Non-operation: +40,000 ft (12,192 m)
- MTBF: 50,000 hrs (Excluding backlight) hour(s)

## Sustainability

- Environmental and energy: EnergyStar 7.0, EPEAT Silver, RoHS, Lead-free, Mercury Free
- Recyclable packaging material: 100 %

## Compliance and standards

- Regulatory Approvals: CE Mark, FCC Class B, RCM, CECP, CU, SASO, KUCAS, cETLus, TUV/ISO9241-307, EPA, WEEE, TCO certified

## Cabinet

- Front bezel: Black
- Rear cover: Grey
- Finish: Glossy

## What's in the box?

- Monitor with stand
- Cables: D-Sub cable, HDMI cable, Power cable
- User Documentation



Issue date 2017-02-09

Version: 4.0.2

12 NC: 8670 001 40637  
EAN: 87 12581 74156 3

© 2017 Koninklijke Philips N.V.  
All Rights reserved.

Specifications are subject to change without notice.  
Trademarks are the property of Koninklijke Philips N.V.  
or their respective owners.

[www.philips.com](http://www.philips.com)

\* "IPS" word mark / trademark and related patents on technologies belong to their respective owners.  
\* Response time value equal to SmartResponse  
\* NTSC 90% (CIE1931), sRGB: 122.7%